



# Core Acceptance Criteria

Trailer Modulators TEBS-E for WABCO applications



AFTERMARKET

# General information

## Accepted

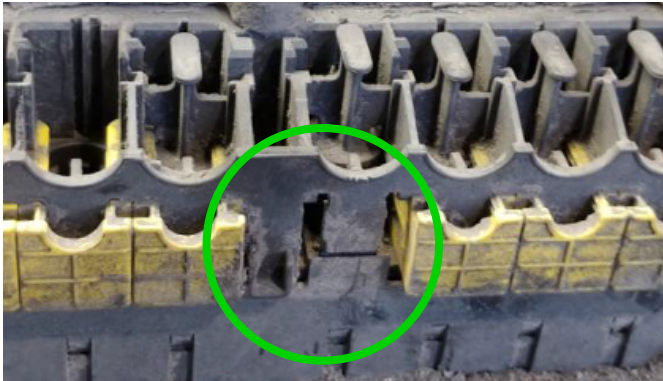
- Core must be in an off-vehicle condition.
- Core must meet acceptance standards established within this document.
- Core mechanical integrity must remain intact (no holes, cracks, disassembled components)
- Any electronic inside core must not have contact with environmental pollutants, especially water.

## Rejected

- The core is a not complete unit and disassembled or altered in any manner
- The core is damaged by non-operational causes such as car crash damage, fire, flood, crack.
- The core has been improperly repaired / serviced.

# Acceptance criteria

Accepted ✓



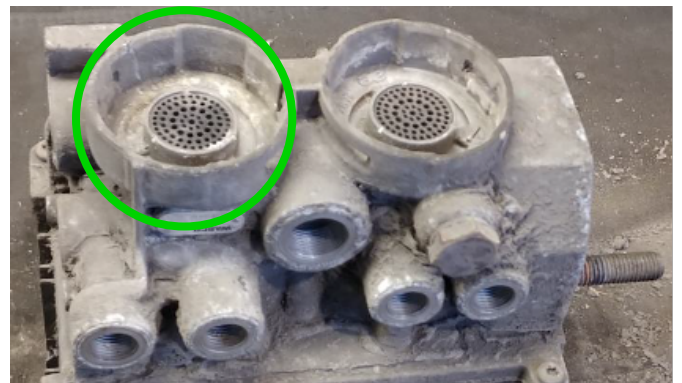
Missing protection covers and plugs



Damaged ribs on the ECU Cover



Surface corrosion



Missing silencers



Missing studs



Damaged ports

# Acceptance criteria

Accepted ✓



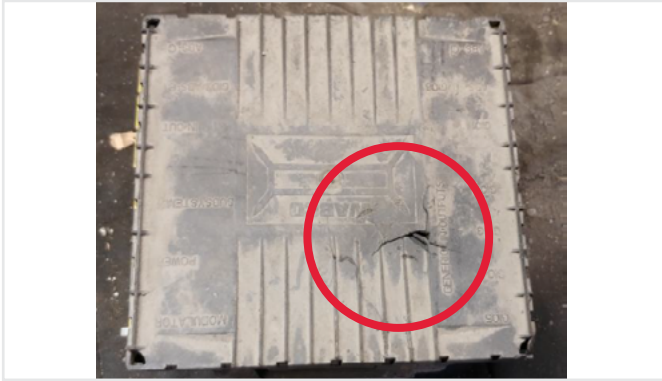
Missing small plastic parts on ECU



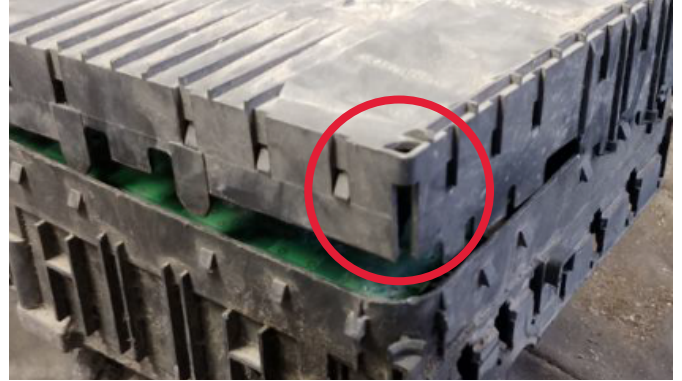
Corrosion on body

# Acceptance criteria

## Rejected



Holes, cracks in ECU cover



Partially dismantled



Deformed / distorted ECU

## ZF Group

ZF CV Systems Poland Sp. z o.o.  
ul. Logistyczna 2,  
55-020 Zorawina (Krajków), Poland

[aftermarket.zf.com](http://aftermarket.zf.com)



[instagram.com/zfaftermarket](https://www.instagram.com/zfaftermarket)  
[facebook.com/zfaftermarket.global](https://www.facebook.com/zfaftermarket.global)  
[youtube.com/@ZFAftermarket](https://www.youtube.com/@ZFAftermarket)  
[linkedin.com/showcase/zfaftermarket](https://www.linkedin.com/showcase/zfaftermarket)