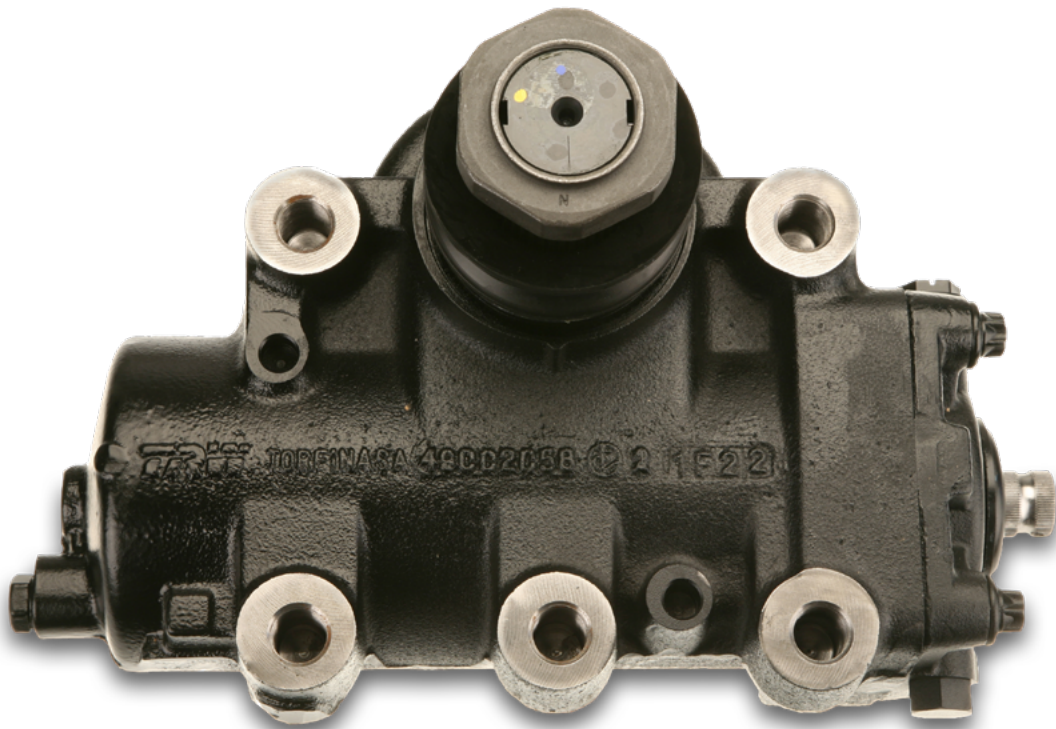




Core Acceptance Criteria

Steering Gears for WABCO product range



AFTERMARKET

General information

Accepted

- Core must be in an off-vehicle condition.
- Core must meet acceptance standards established within this document.
- Core mechanical integrity must remain intact (no holes, cracks, disassembled components).
- Any electronic inside core must not have contact with environmental pollutants, especially water.

Rejected

- The core is a not complete unit and disassembled or altered in any manner.
- The core is damaged by non-operational causes such as car crash damage, fire, flood, crack.
- The core has been improperly repaired / serviced.

Attention

- Core must be drained before returning.
- Plugs must be installed before returning.

Acceptable part numbers

WABCO PN	TRW Ref	ZF Ref	OE Ref	Manufacturer	Vehicle Manufacturer	Vehicle Model
440005004R	JRB5004	TAS85621, TAS85636, TAS85642, TAS85651	1353046, 1438214, 2260722, 571407, 573181	TRW	SCANIA	4 - series, P,G,R,T - series
440005020R	JRB5020	TAS80602, THP80613, THP80623	1363862, 1363862R, 1444788, 1444788R, 1671202, 1671204, 1671210, 1927791	TRW	DAF	95 XF, XF 105, XF 95
440005043R	JRB5043	THP90602	1363885, 1363885R, 1444715, 1444715R, 1805093, 1805097, 1805099, 1882792, 1927787	TRW	DAF	CF 75, CF 85
440005009R	JRB5009	THP80618, THP80628, THP80650	1363880, 1363880R, 1444710, 1444710R, 1805088 VDL 41444710	TRW	DAF	CF 65, CF 75, CF 85
440005017R	JRB5017	THP80629, THP80651	DAF 1444711, 1444711R, 1805089 VDL 41444711	TRW	DAF	CF 75, CF 85
440005022R	JRB5022	TAS75638, TAS80604, THP80615, THP80625	DAF 1343211, 1343211R, 1363863, 1363863R, 1374933, 1374933R, 1444789, 1444789R, 1671203, 1671205, 1671211 SOLARIS 19000578	TRW	DAF	95 XF, XF 105, XF 95
440005055R	JRB5055	TAS85635, TAS85641, TAS85650	10573182, 1438212, 1930695, 2260723, 573182	TRW	SCANIA	4 - series, P,G,R,T - series
440005054R	JRB5054	THP80633	20350263, 20402195, 20502916, 8113848, 85000204, 85000212	TRW	VOLVO	FL
440005536R	JRB5536	THP80656	1860620, 1860620R, 1860624, 1860624R	TRW	DAF	CF
440005013R	JRB5013	THP80616, THP80626	1363882, 1363882R, 1444712, 1444712R, 1671184, 1805090, 1805090R, 1805094, 1927782, 1927784	TRW	DAF	CF 65, CF 75, CF 85
440005545R	JRB5545	THP90603	1444799, 1444799R, 1671206, 1671212, 1853565, 1927792, 1927793	TRW	DAF	XF 95, XF 105

Acceptable part numbers

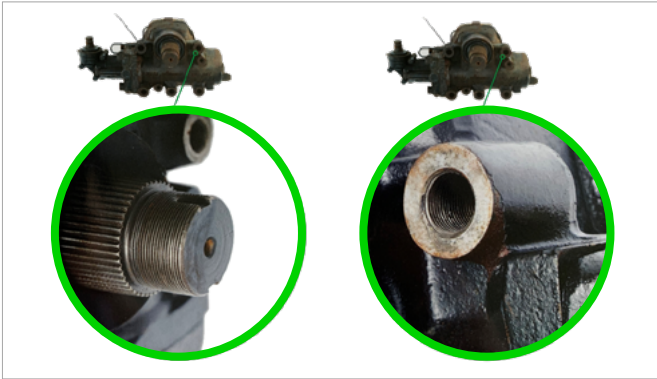
WABCO PN	TRW Ref	ZF Ref	OE Ref	Manufacturer	Vehicle Manufacturer	Vehicle Model
440005015R	JRB5015	THP80627	1363883, 1363883R, 1444713, 1444713R, 1671185, 1805091, 1805095, 1927783, 1927785	TRW	DAF	CF 65, CF 75, CF 85
-	JRB5002	TAS80601, THP80612, THP80622	1363860, 1363860R, 1444786, 1444786R, 1671200	TRW	DAF	95 XF, XF 105, XF 95
-	JRB5007	TAS85627, TAS85637, TAS85643, TAS85652	1381877, 1438213, 1930694, 2260735, 571406, 573184	TRW	SCANIA	4 - series, P,G,R,T - series
-	JRB5029	TAS30606, TAS30609	IVECO 4834721 HAKO 124740 MULTICAR 124740	TRW	IVECO	EUROCARGO I-III, EUROFIRE
-	JRB5538	THP90612	1846036, 1850954, 1850954R, 1861578, 1861578R, 1889962, 1889962R	TRW	DAF	XF 106
-	JRB5060	-	970 460 01 00, 970 460 01 00 80, 970 460 01 00 87, A 970 460 01 00, A 970 460 01 00 80, A 970 460 01 00 87	ThyssenKrupp	MERCEDES- BENZ	ATEGO 1014 - 1118, ATEGO 1214 - 1229, ATEGO 1315 - 1419, ATEGO 1515 - 1730, ATEGO 712 - 717, ATEGO 812 - 830, ATEGO 914 - 930
-	JRB5061	-	970 460 08 00, 970 460 08 00 80, 970 460 08 00 87, A 970 460 08 00, A 970 460 08 00 80, A 970 460 08 00 87	ThyssenKrupp	MERCEDES- BENZ	ATEGO 1014 - 1118, ATEGO 712 - 717, ATEGO 812 - 830, ATEGO 914 - 930
-	JRB5062	-	974 460 01 00, 974 460 01 00 80, 974 460 01 00 87, A 974 460 01 00, A 974 460 01 00 80, A 974 460 01 00 87	ThyssenKrupp	MERCEDES- BENZ	ATEGO 1014 - 1118, ATEGO 1214 - 1229, ATEGO 1315 - 1419, ATEGO 1515 - 1730, ATEGO 1823 - 1929, ATEGO 2124 - 2530, ATEGO 914 - 930
-	JRB5065	-	940 460 01 00, 940 460 22 00, 940 460 33 00, 940 460 33 00 80, 940 460 33 00 87, 940 460 33 00 88, A 940 460 01 00, A 940 460 22 00, A 940 460 33 00, A 940 460 33 00 80, A 940 460 33 00 87, A 940 460 33 00 88	ThyssenKrupp	MERCEDES- BENZ	ACTROS 1824 - 1863, ACTROS 2024 - 2063, ACTROS 2424 - 2463, ACTROS 2524 - 2563, ACTROS 2624 - 2665, ATEGO 1823 - 1929, ATEGO 2124 - 2530

Acceptable part numbers

WABCO PN	TRW Ref	ZF Ref	OE Ref	Manufacturer	Vehicle Manufacturer	Vehicle Model
-	JRB5067	-	940 460 24 00, 940 460 35 00, 940 460 35 00 80, 940 460 35 00 87, A 940 460 24 00, A 940 460 35 00, A 940 460 35 00 80, A 940 460 35 00 87	ThyssenKrupp	MERCEDES-BENZ	ACTROS 1824 - 1863, ACTROS 2024 - 2063, ACTROS 2524 - 2563, ACTROS 2624 - 2665, ACTROS 2732 - 2748, ACTROS 3231 - 3339, ACTROS 3340 - 3939, ACTROS 4036 - 4844, ACTROS 5041 - 5048, ATEGO 1823 - 1929, ATEGO 2124 - 2530, ATEGO 2628 -
-	JRB5068	-	940 460 41 00, 940 460 41 00 80, 940 460 41 00 87, A 940 460 41 00, A 940 460 41 00 80, A 940 460 41 00 87	ThyssenKrupp	MERCEDES-BENZ	ACTROS 1824 - 1863, ACTROS 2524 - 2563
-	JRB5069	-	957 460 00 00, 957 460 00 00 80, 957 460 00 00 87, A 957 460 00 00, A 957 460 00 00 80, A 957 460 00 00 87	ThyssenKrupp	MERCEDES-BENZ	ATEGO 2124 - 2530

Acceptance criteria

Accepted ✓



Small signs of rust on marked area



Fully assembled device



Complete set of gear



Complete component



Side cover without damage



Valve cover without damage

Acceptance criteria

Accepted ✓



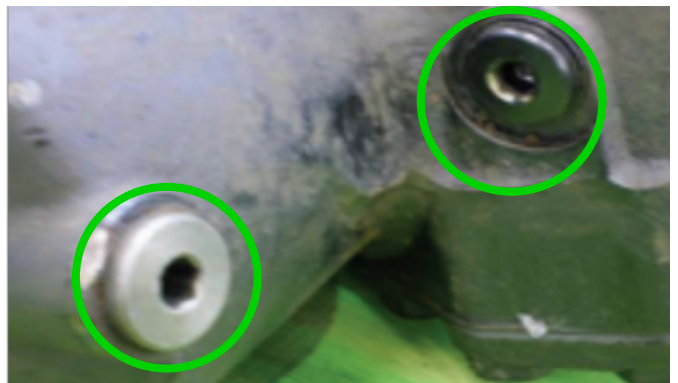
No or small signs of rust



Undamaged housing



Plugs must be installed before returning



Plugs must be installed before returning



Undamaged housing



Gears must be marked by name plate or sticker

Acceptance criteria

Accepted ✓



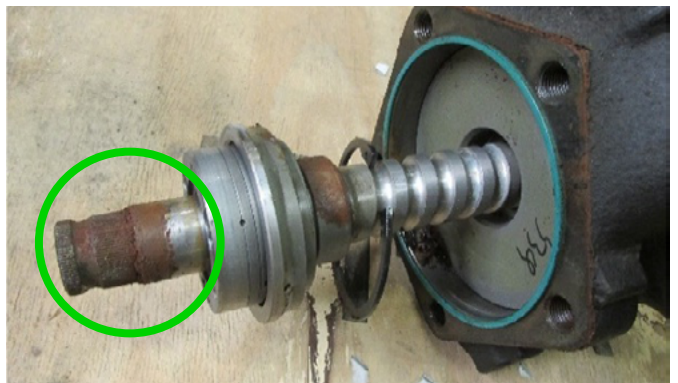
Thread without damages



Valve without damages



Valve with preserved chrome surface



Worn valve or rusty surface from bearing, repairable by chrome plating



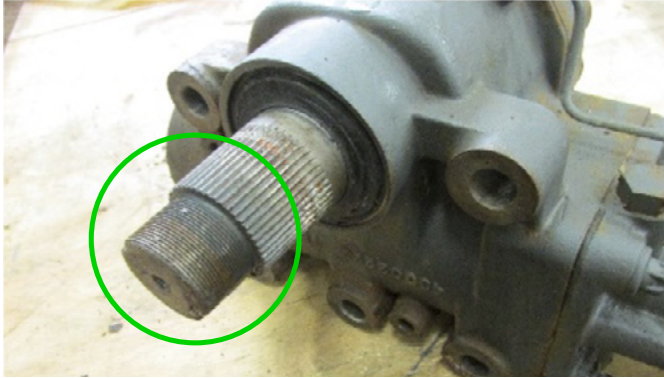
Thread without damages



Broken screws without damaging thread

Acceptance criteria

Accepted ✓



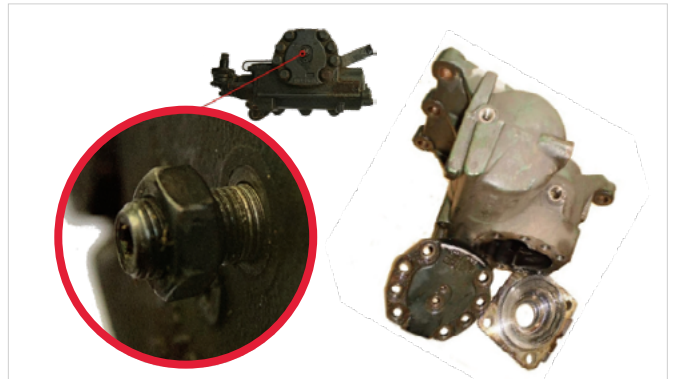
Sector-shaft without damage

Acceptance criteria

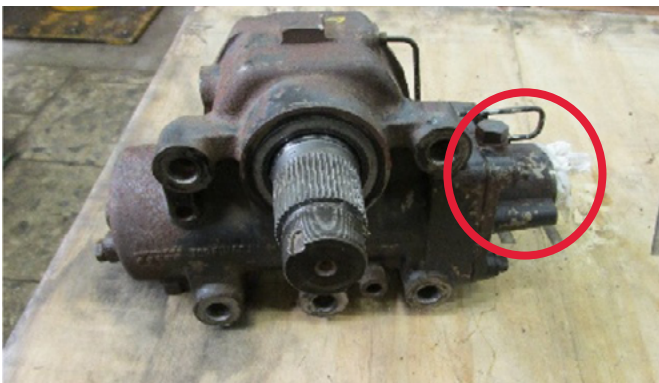
Rejected



Heavy rust on marked area



Partially or totally dismantled



Incomplete set of gear



Cuttet component



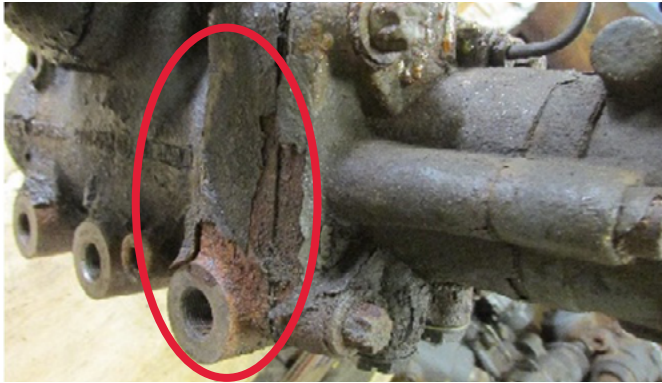
Damage side cover



Damage valve cover

Acceptance criteria

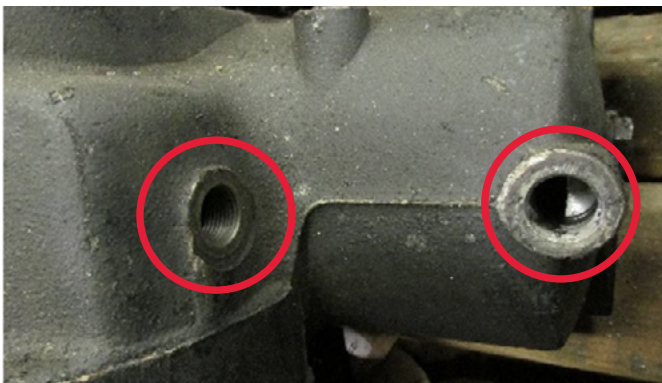
Rejected



Heavy rust



Unprofessional disassembly – damaged housing



Plugs missing



Transporter plugs missing



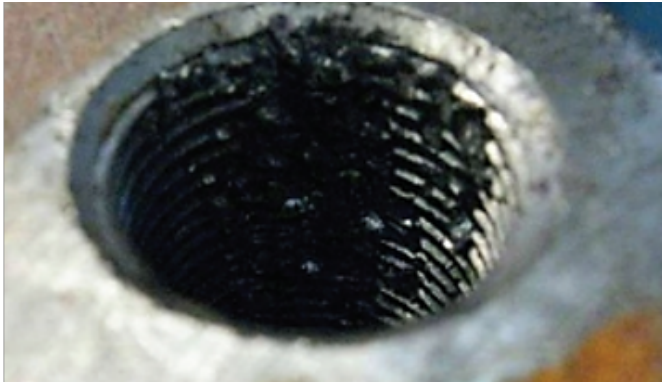
Improper process – damaged housing



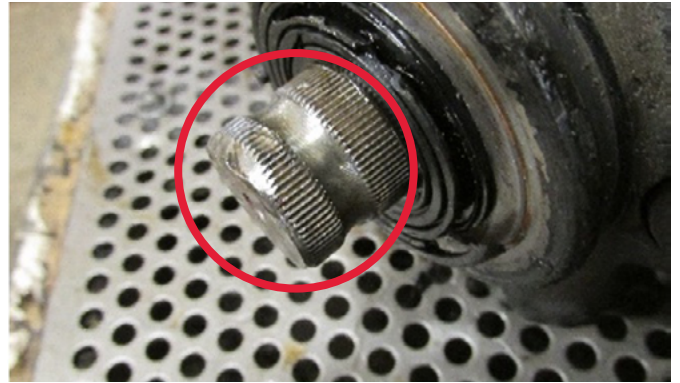
Gears without name plate or sticker

Acceptance criteria

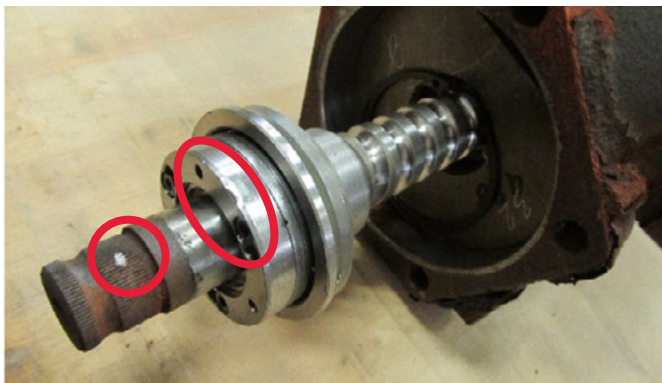
Rejected (X)



Damaged thread



Damaged valve



Mechanically damaged valve



Damaged thread



Damaged thread

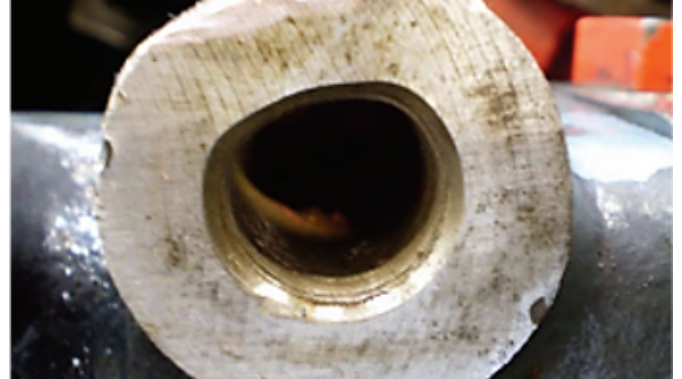


Acceptance criteria

Rejected (X)



Gears with missing components



Holes deformation, damages

ZF Group

ZF CV Systems Poland Sp. z o.o.
ul. Logistyczna 2,
55-020 Zorawina (Krajków), Poland

aftermarket.zf.com



[instagram.com/zfaftermarket](https://www.instagram.com/zfaftermarket)
[facebook.com/zfaftermarket.global](https://www.facebook.com/zfaftermarket.global)
[youtube.com/@ZFAftermarket](https://www.youtube.com/@ZFAftermarket)
[linkedin.com/showcase/zfaftermarket](https://www.linkedin.com/showcase/zfaftermarket)