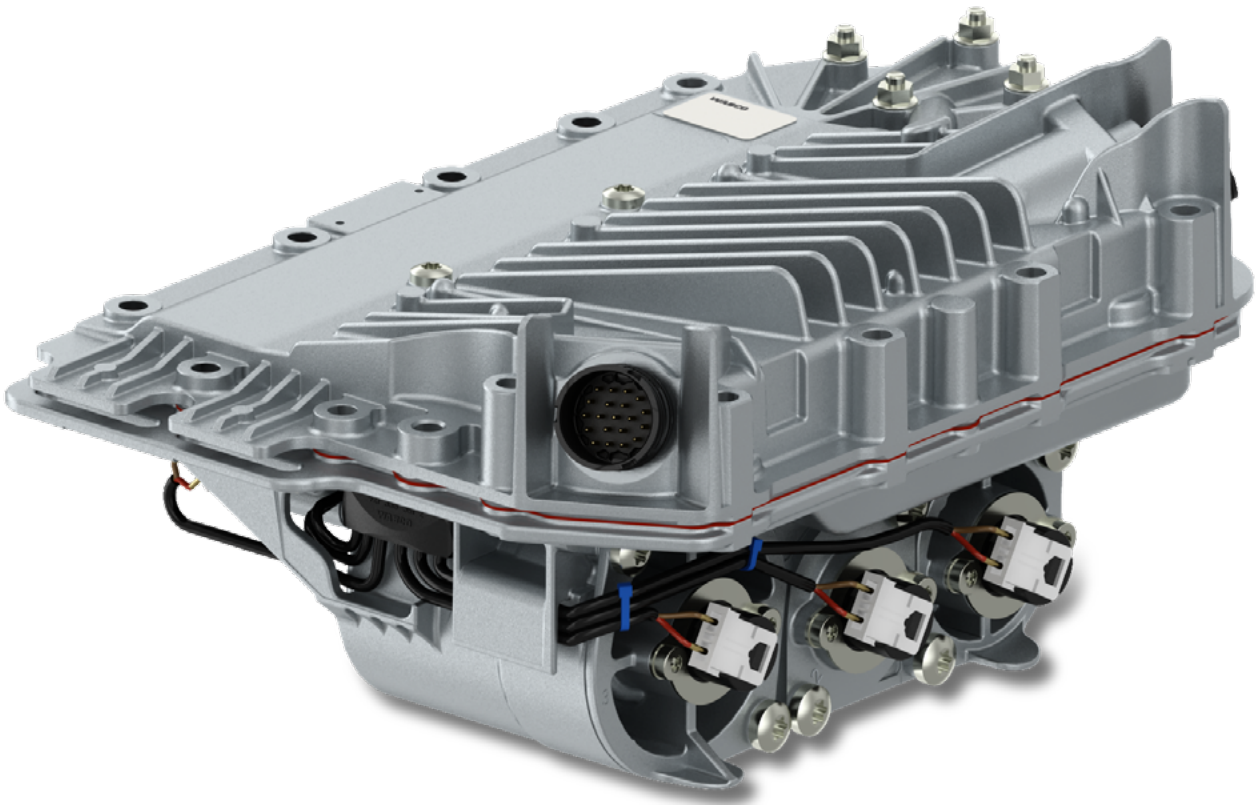




Core Acceptance Criteria

Gearbox Actuator GS3 for WABCO variants



AFTERMARKET

General information

Accepted

- Core must be in an off-vehicle condition.
- Core must meet acceptance standards established within this document.
- Core must be properly handled and stored.
- Core must be complete and not disassembled.

Rejected

- The core is a not complete unit and disassembled or altered in any manner (except mechanical/actuation and electronic parts case).
- The core is damaged by non-operational causes such as car crash damage, rough handling, fire or improper removal, crack, stuff losses.
- There has been prior attempt at repair/rebuilding the component.

Acceptable part numbers

The cores of the Pneumatic Gearbox Actuator for ZF Gearbox cores must concern the following Part Numbers:

| WABCO Part No. | WABCO REMAN Part No. |
|----------------|----------------------|
| 421 355 011 0 | 421 355 011 R |
| 421 355 937 2 | |
| 421 355 012 0 | 421 355 012 R |
| 421 355 939 2 | |
| 421 355 015 0 | 421 355 015 R |
| 421 355 953 2 | |
| 421 355 022 0 | 421 355 022 R |
| 421 355 938 2 | |
| 421 355 023 0 | 421 355 023 R |
| 421 355 9 40 2 | |
| 421 355 950 2 | 421 355 950 R |
| 421 355 956 2 | |

Acceptance criteria

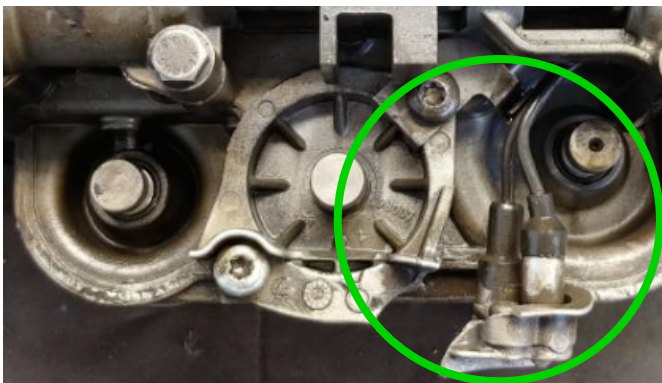
Accepted ✓



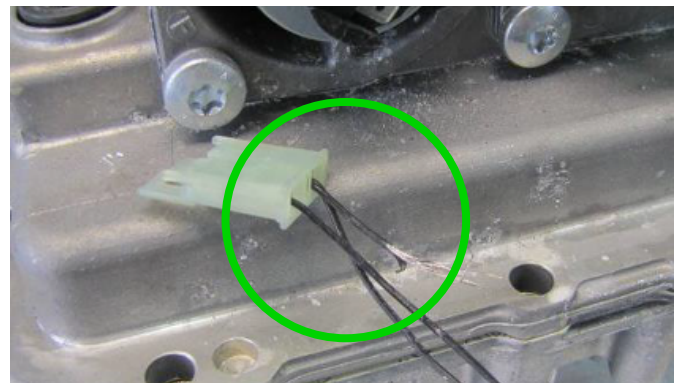
Surface Corrosion



Small signs of hit



Broken or damaged Cylinder Cover



Cut wires



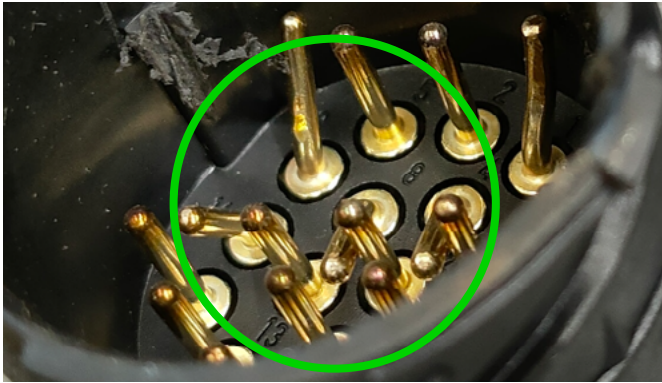
Scratches on external surface



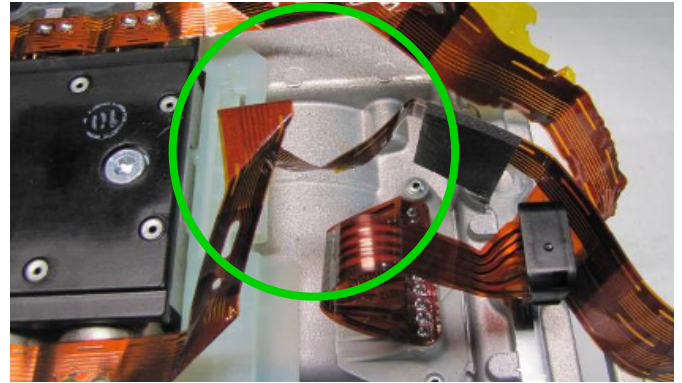
Scratches on external surface

Acceptance criteria

Accepted ✓



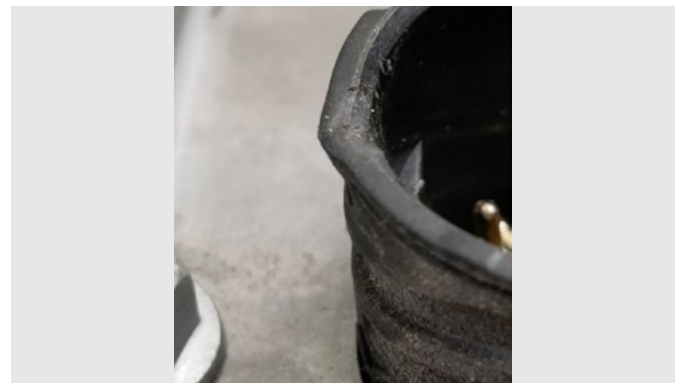
Broken pins



Damaged, broken, or cut ribbons



Broken connectors



Broken connectors

Acceptance criteria

Rejected 



Serious damages to the body. Missing material



Significant signs of hit on external surfaces



Hard damages of ECU cover

ZF Group

ZF CV Systems Poland Sp. z o.o.
ul. Logistyczna 2,
55-020 Zorawina (Krajków), Poland

aftermarket.zf.com



[instagram.com/zfaftermarket](https://www.instagram.com/zfaftermarket)
[facebook.com/zfaftermarket.global](https://www.facebook.com/zfaftermarket.global)
[youtube.com/@ZFAftermarket](https://www.youtube.com/@ZFAftermarket)
[linkedin.com/showcase/zfaftermarket](https://www.linkedin.com/showcase/zfaftermarket)