



# Core Acceptance Criteria

Central Brake Unit (CBU) for WABCO applications



AFTERMARKET

# General information

## Accepted

- Core must be a WABCO part number
- Core must be in an off-vehicle condition.
- Core must meet acceptance standards established within this document.
- The braking unit must not be cracked, broken or deformed.
- The body must not be strongly corroded or burnt (structure stability disturbance).
- The braking unit must be complete and not disassembled.
- The ECU unit must not have damages and broken connectors.

## Rejected

- The core is a not complete unit and disassembled or altered in any manner.
- The core is damaged by non-operational causes such as car crash damage, fire, crack, stuff losses.
- The core has been improperly repaired / serviced.

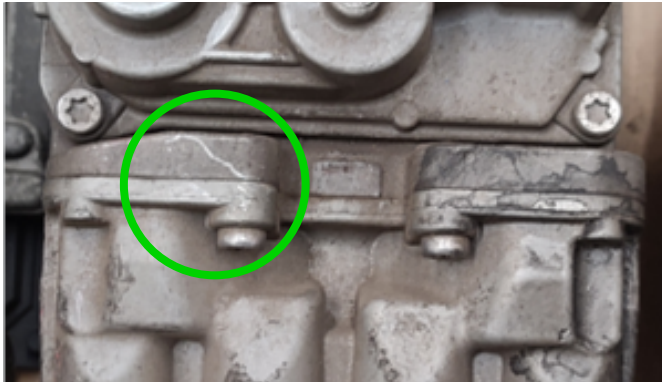
# Acceptable part numbers

The cores of the Central Brake Unit for MAN CBU must concern the following part numbers:

MAN Part No.	WABCO Part No.	WABCO REMAN Part No.
81.52130-6312	480 020 028 0	
81.52130-6310	480 020 026 0	
81.52130-6308	480 020 024 0	480 020 028 R
81.52130-6306	480 020 022 0	
81.52130-6304	480 020 020 0	
81.52130-6300	480 020 008 0	
81.52130-6297 81.52130-6292	480 020 006 0	480 020 020 R
81.52130-6288 81.52130-6286	480 020 003 0	
81.52130-6309	480 020 025 0	
81.52130-6307	480 020 023 0	
81.52130-6305	480 020 021 0	
81.52130-6299	480 020 009 0	
81.52130-6296 81.52130-6291	480 020 007 0	
81.52130-6287	480 020 005 0	

# Acceptance criteria

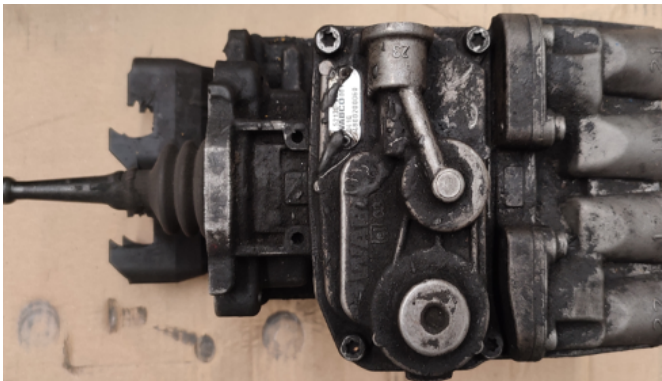
Accepted ✓



Scratches on the body



Discoloration



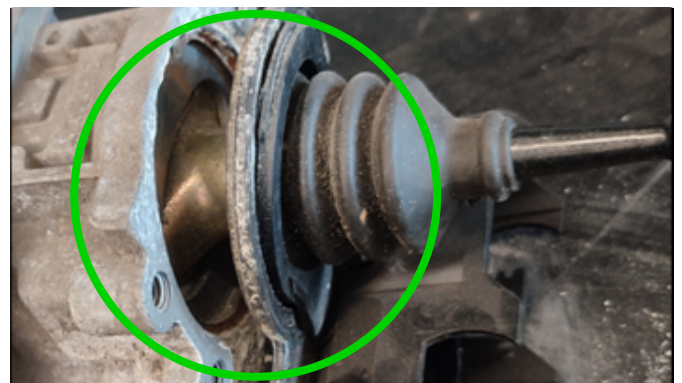
Contamination



Contamination



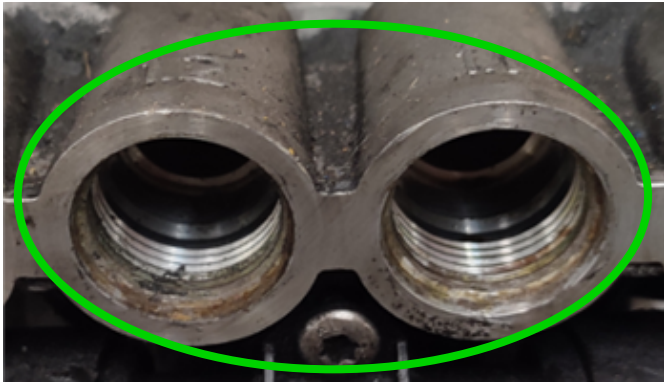
Corrosion on ports



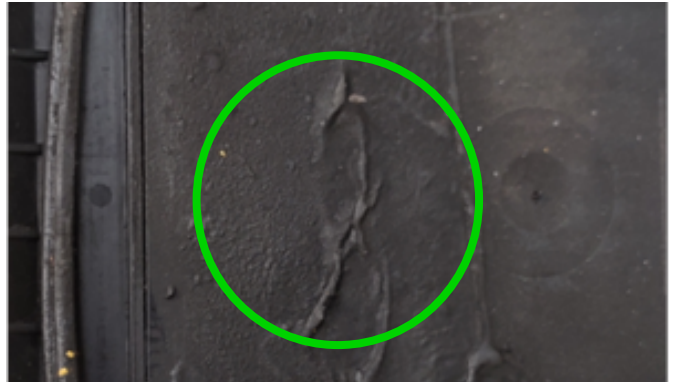
Dismantled dust cover

# Acceptance criteria

Accepted ✓



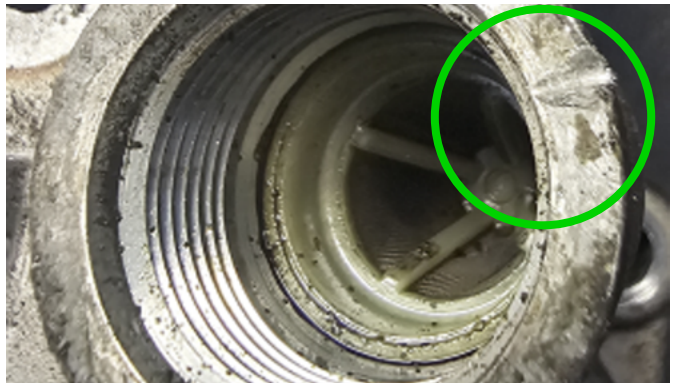
Rust and discoloration on ports



Contamination and bituminous mass



Corroded screws



Damaged ports



Mechanical damages



Mechanical damages

# Acceptance criteria

Accepted ✓



Missing material on ECU



Small mechanical damages on ECU

# Acceptance criteria

Rejected (X)



Missing screws



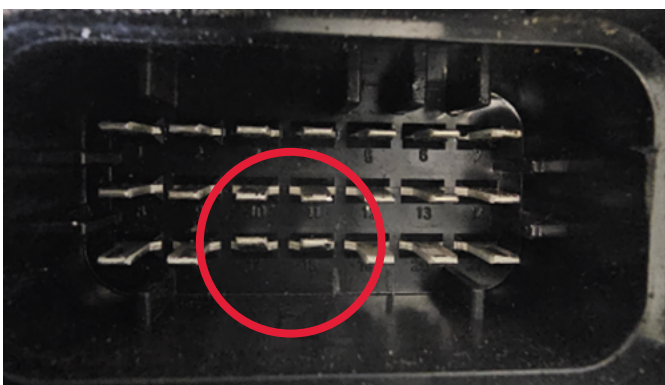
Dismantled device or missing components



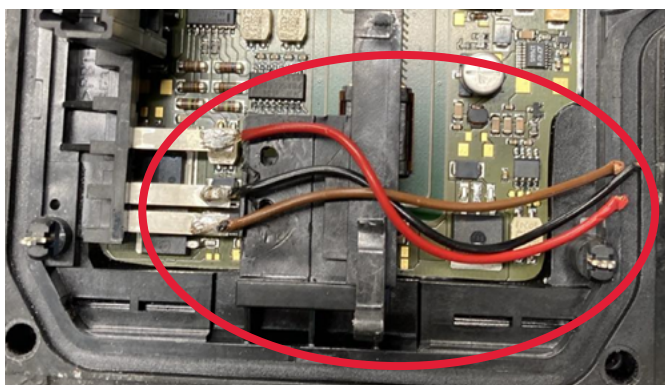
Serious damages on ECU



Serious damages on ECU



Bent Pins



Unauthorised repairs

**ZF Group**

ZF CV Systems Poland Sp. z o.o.  
ul. Logistyczna 2,  
55-020 Zorawina (Krajków), Poland

[aftermarket.zf.com](http://aftermarket.zf.com)



[instagram.com/zfaftermarket](https://www.instagram.com/zfaftermarket)  
[facebook.com/zfaftermarket.global](https://www.facebook.com/zfaftermarket.global)  
[youtube.com/@ZFAftermarket](https://www.youtube.com/@ZFAftermarket)  
[linkedin.com/showcase/zfaftermarket](https://www.linkedin.com/showcase/zfaftermarket)