



Core Acceptance Criteria

Air Disc Brake Calipers for WABCO applications



REMAN

General information

Accepted

- Core must be for brake discs either 330mm, 375 mm or 430 mm.
- Core must be from one of type ADB: PAN-range MAXX-range
- Core must be in an off-vehicle condition.
- Core must meet acceptance standards established within this document.
- The brake caliper must not be cracked, broken or deformed.
- The body must not be strongly corroded or burnt (structure stability disturbance).
- The threads must not be damaged.
- The caliper must be complete and not disassembled.

Rejected

- The core is a not complete unit and disassembled or altered in any manner.
- The core is damaged by non-operational causes such as car crash damage, fire, crack, stuff losses.
- The core has been improperly repaired / serviced.

Acceptance criteria

Accepted 



Surface corrosion which doesn't have impact on surface, no pitting allowed (carrier, frame)



Surface corrosion which doesn't have impact on surface, no pitting allowed (carrier, frame)



Surface corrosion which doesn't have impact on surface, no pitting allowed (carrier)



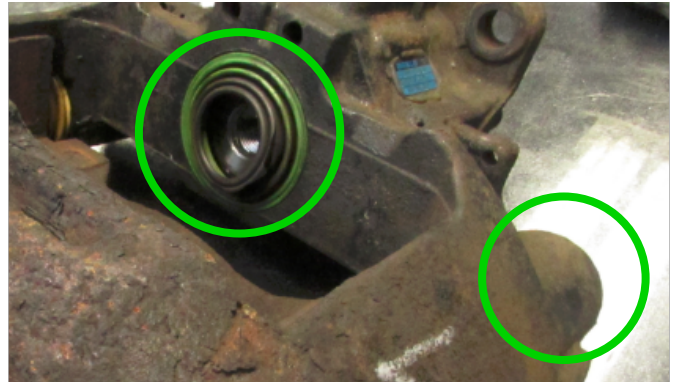
Surface corrosion

Acceptance criteria

Accepted ✓



Cut adjusting screw



Missing small parts (adjusting screw, caps etc.)



Cut adjusting screw (metal screw)



Traces of overheating

Acceptance criteria

Rejected 



Pitting corrosion on frame (Not off-vehicle condition)



Pitting corrosion on frame (Not off-vehicle condition)



Pitting corrosion (structure of cast is degraded)



Cracked frame or carrier



Cut screw (corrosion)



Disassembled devices

Acceptance criteria

Rejected 



Cracked frame or carrier



Pitting corrosion on carrier (Not off-vehicle condition)

ZF Group

ZF CV Systems Poland Sp. z o.o.
ul. Logistyczna 2,
55-020 Zorawina (Krajków), Poland

aftermarket.zf.com



[instagram.com/zfaftermarket](https://www.instagram.com/zfaftermarket)
[facebook.com/zfaftermarket.global](https://www.facebook.com/zfaftermarket.global)
[youtube.com/@ZFAftermarket](https://www.youtube.com/@ZFAftermarket)
[linkedin.com/showcase/zfaftermarket](https://www.linkedin.com/showcase/zfaftermarket)