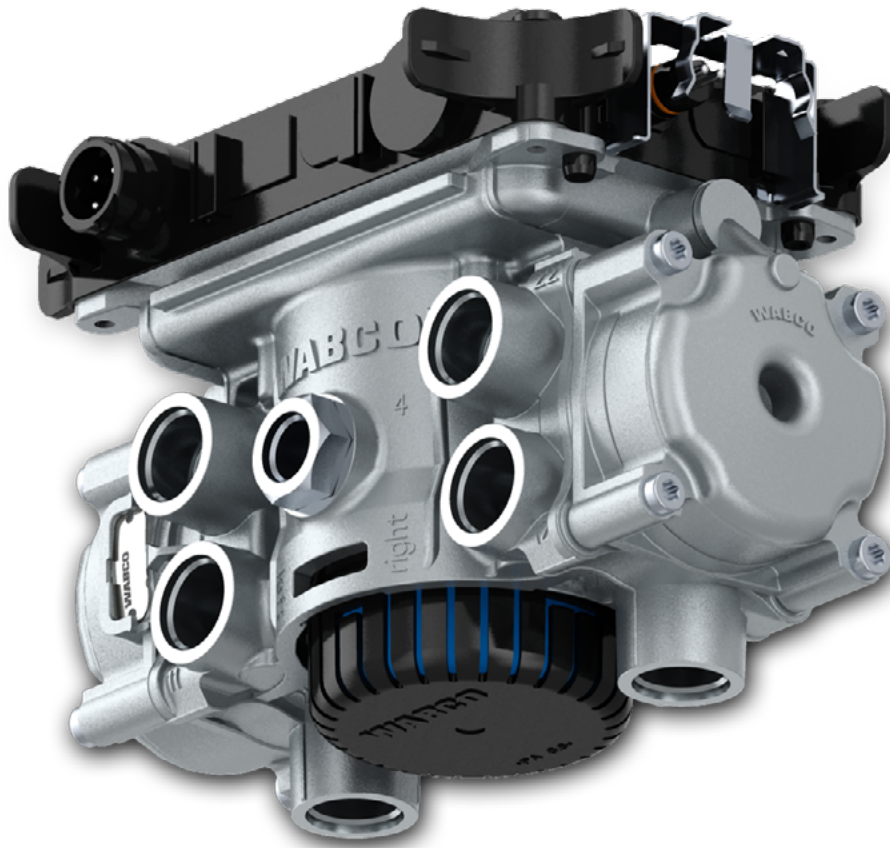




Core Acceptance Criteria

Axle Modulators for WABCO applications



AFTERMARKET

General information

Accepted

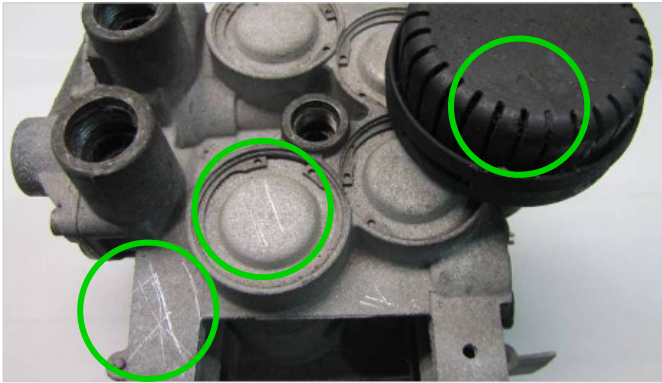
- Core must be in an off-vehicle condition.
- Core must meet acceptance standards established within this document.
- The Axle Modulator must not be cracked, broken or deformed.
- The Axle Modulator must be complete and not disassembled.
- Acceptable part numbers:
 - **Axle Modulator Gen I and its remanufactured versions**
 - 480 103 XXX 0
 - 480 103 XXX R
 - **Axle Modulator Gen II and its remanufactured versions**
 - 4801040010, 4801040020, 4801040030, 4801040050, 4801040060, 4801040070, 4801040080, 4801040090, 4801041060, 4801041070
 - 480104001R, 480104002R, 480104003R, 480104005R, 480104006R, 480104106R, 480104107R
 - **Axle Modulator Gen III and its remanufactured versions**
 - 4801050060, 4801050070
 - 480105006R, 480105007R
 - **Axle Modulator Gen IV**
 - 480106XXX0

Rejected

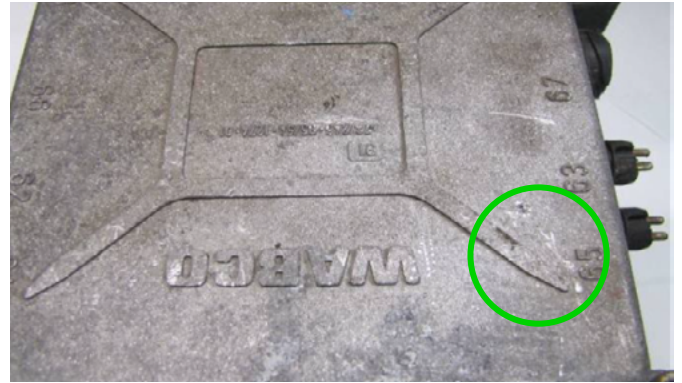
- The core is a not complete unit and disassembled or altered in any manner.
- The core is damaged by non-operational causes such as car crash damage, fire or improper removal, crack.
- There has been prior attempt at rebuilding the component.
- The core has been improperly repaired / serviced.

Acceptance criteria

Accepted ✓



Small scratches on the body, silencer and covers



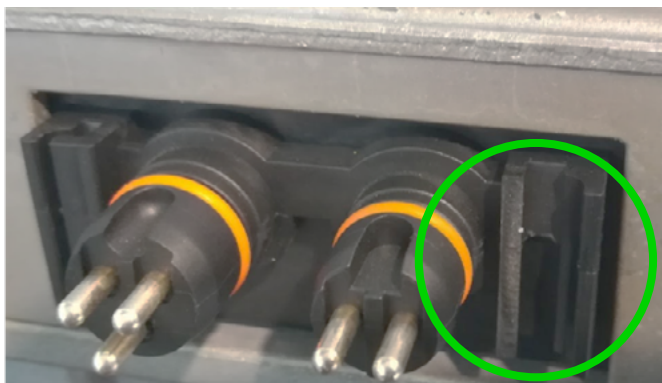
Small scratches on the body, silencer and covers



Damaged ports



Bent Pins, Scratches on connector
(generation 1, 480103XXXX)



Broken part of connector frame (gen1)



Cutted, damaged or missing cover flips

Acceptance criteria

Accepted ✓



Surface contamination, dirt.



Corroded ports



Corroded screws



Scratches on external surface



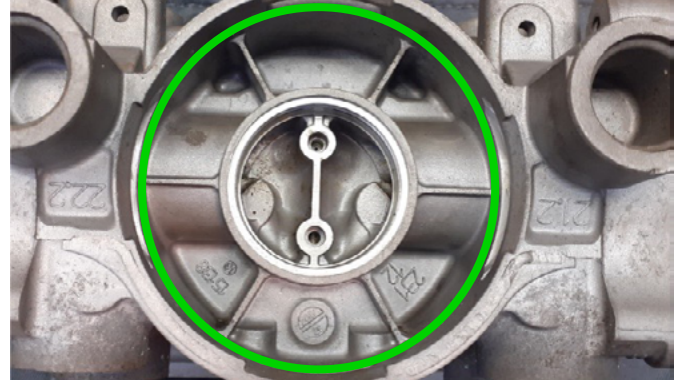
Missing small parts of plastic cover

Acceptance criteria

Accepted ✓



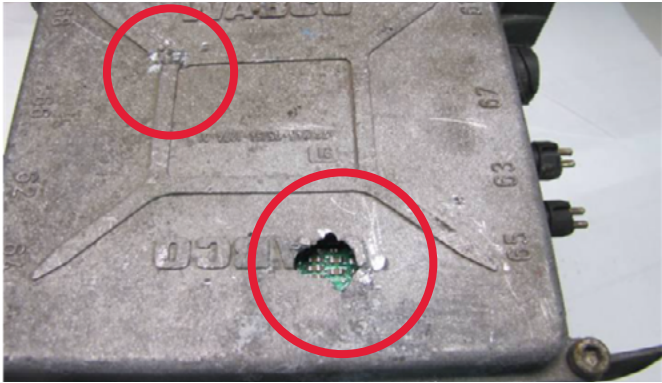
Broken rib of plastic cover



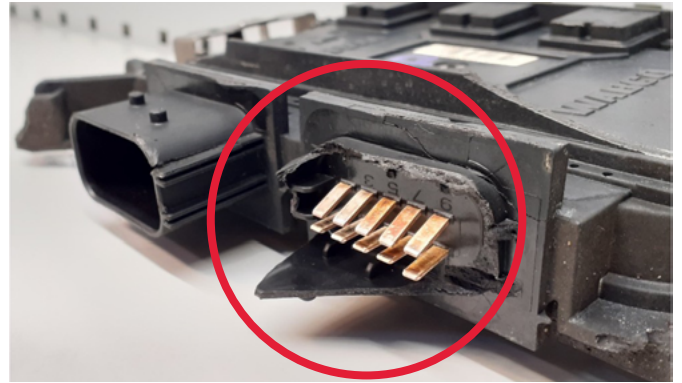
Missing silencer

Acceptance criteria

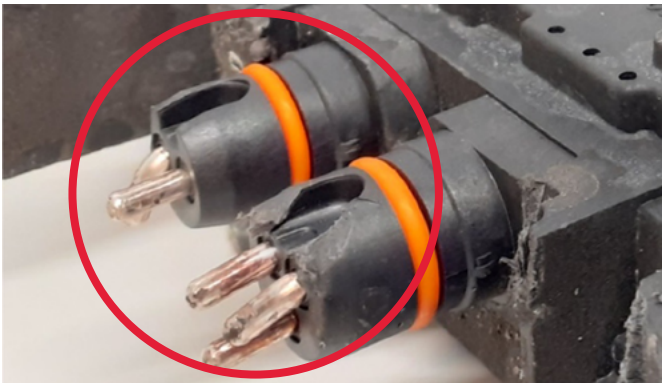
Rejected



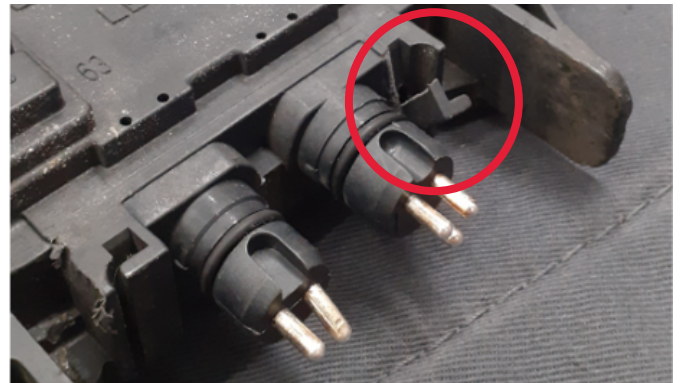
Serious damages or signs of hit on the external surfaces



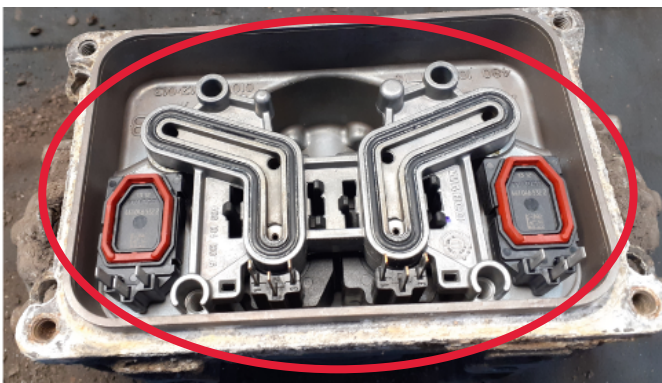
Serious damages to the ECU, broken connector housing (generation 2 & 3)



Missing, bent pins or corrosion in the connector (generation 2 & 3)



Broken shackles due to improper handling (generation 2 & 3)



Missing ECU or other parts

ZF Group

ZF CV Systems Poland Sp. z o.o.
ul. Logistyczna 2,
55-020 Zorawina (Krajków), Poland

aftermarket.zf.com



[instagram.com/zfaftermarket](https://www.instagram.com/zfaftermarket)
[facebook.com/zfaftermarket.global](https://www.facebook.com/zfaftermarket.global)
[youtube.com/@ZFAftermarket](https://www.youtube.com/@ZFAftermarket)
[linkedin.com/showcase/zfaftermarket](https://www.linkedin.com/showcase/zfaftermarket)