

HCV REMANUFACTURED STEERING GEARS

OLD CORE RETURN GUIDELINES

CREDIT WILL ONLY BE ISSUED BASED UPON THE FOLLOWING CRITERIA.
OLD UNITS WILL ONLY BE ACCEPTED FOR CREDIT IF THEY MATCH THE PART NUMBER SOLD – i.e. LIKE FOR LIKE

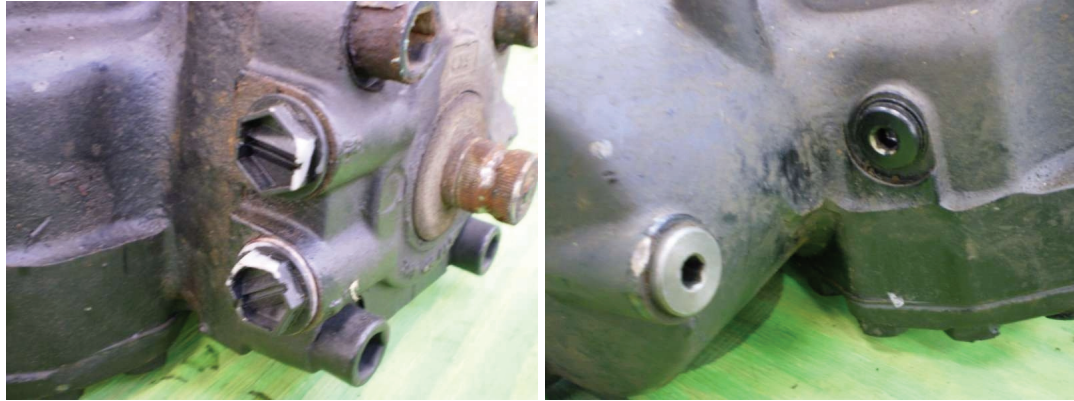
- 1 . CORE MUST BE RETURNED WITH RED TAG SUPPLIED WITH NEW UNIT.



2. CORE MUST BE DRAINED BEFORE RETURNING.



3. PLUGS MUST BE INSTALLED BEFORE RETURNING



4. CREDIT WILL NOT BE ACCEPTED IF THERE IS THE FOLLOWING DAMAGE



EXCESSIVE RUST



DAMAGE TO MOUNTINGS

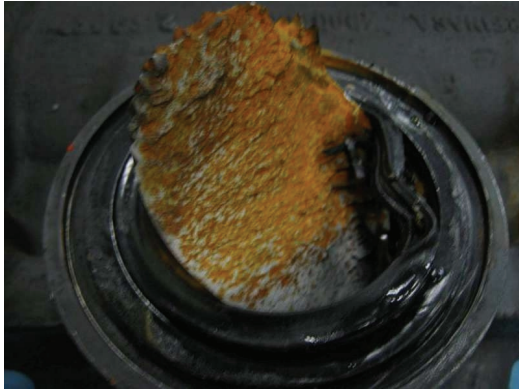


SHAFT DAMAGE (hammer)

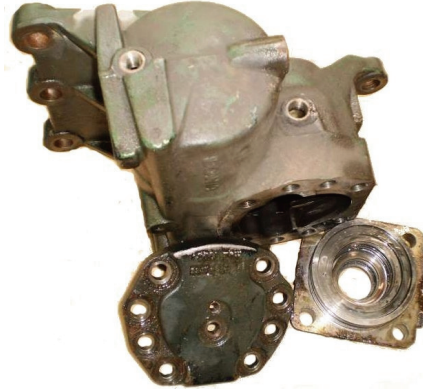


THREAD DAMAGE





SHAFT DAMAGE (snapped)

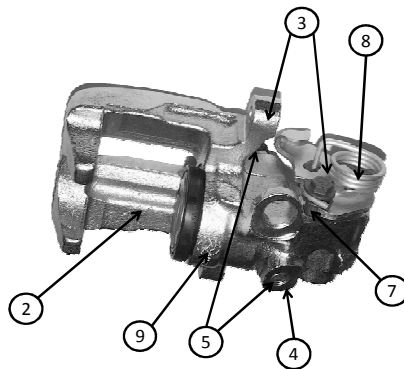


DISMANTLED



Core Return Criteria for Exchange Calipers:

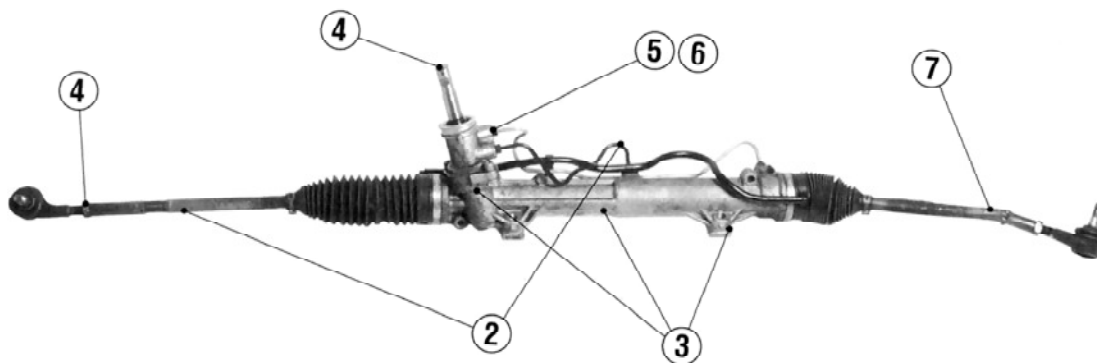
1. Remove the red tag supplied with the exchange part and fix it to the old core. The tag has to be fixed to old core to receive your credit.
2. Core has to be complete.
3. No major damages on the housing and actuators.
4. Sealing plugs of the exchange part has to be fixed to the old core.
5. Cores with damaged port threads will not be accepted.
6. Changes or rework at the hydraulic housing will not be accepted.
7. Fastening and plug screws must not be damaged.
8. Cores with dismantled or incomplete hand brake lever will not be accepted.
9. Cores which have already been remanufactured will not be accepted.
10. Core to be returned in original packaging.



If the core is damaged and the part cannot be remanufactured you will lose your refund.

Core Return Criteria for Exchange Steering Gears:

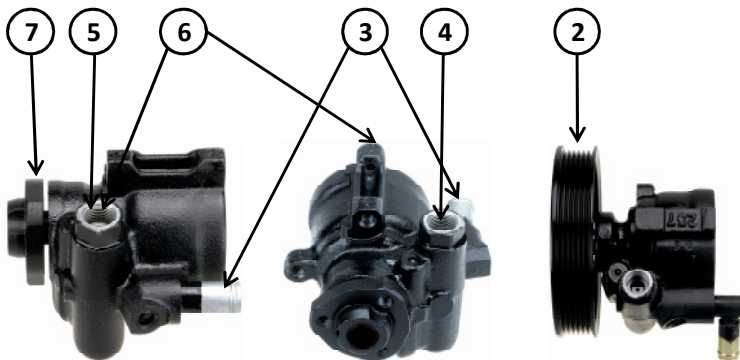
1. Remove the red tag supplied with the exchange part and fix it to the old core. The tag has to be fixed to old core to receive your credit.
2. Core has to be complete as shown in the actual Steering Gear Catalogue.
3. No major damage to housing or rack tube.
4. Thread and spline protectors removed from new unit should be fitted to the old unit.
5. Sealing plugs of the exchange part have to be fixed to the old core.
6. Cores with damaged port threads will not be accepted.
7. Cores with defect axial rods will not be accepted.
8. Core to be returned in original packaging.



If the core is damaged and the part cannot be remanufactured you will lose your refund.

Core Return Criteria for Exchange Servo Pumps:

1. Remove the red tag supplied with the exchange part and fix it to the old core. The tag has to be fixed to old core to receive your credit.
2. Old core has to be complete.
3. No major damages to fixing points and tubes.
4. Drain off oil.
5. Sealing plugs and protectors from the exchange part have be fitted to the old core.
6. Cores with damaged threads will not be accepted..
7. Cores with damaged pulleys and shafts will not be accepted.
8. Core to be returned in original packaging.



If the core is damaged and the part cannot be remanufactured you will lose your refund.