

COMMERCIALLY CONFIDENTIAL

Core Acceptance Criteria and Returns process - Non UK Customers

EQUIPMENT: SMART INJECTOR REMANUFACTURING AFTERMARKET
SUBJECT: Core Acceptance Criteria and Returns process - Non UK Customers

1. INTRODUCTION

This document describes the criteria to be applied to the core in order for the injector to be accepted for remanufacturing.

Each injector needs to be checked against every one of the following criteria.

2. CORE ACCEPTANCE CRITERIA - GENERAL OVERVIEW

Examine the condition of core and reject if unacceptable, typical criteria includes:

- Incomplete assembly ([section 1](#)),
- Assembled of scrap / incorrect parts,
- Dismantled (EUP must not be partially dismantled)
- Tampered with
- Damaged ([section 2](#)),
- Badly corroded ([section 3](#)),
- Painted,
- Unidentified core ([section 4](#))

Core with light tooling marks is acceptable.

Core exhibiting any of the issues describe above needs to be scrapped.

2.1 Complete injector

The injector must be complete and assembled (not dismantled).



Injectors with edge filter missing are not acceptable.



Incomplete core needs to be scrapped.

2.2 Damaged core

Injector with heavy scrapes and gouges or with thread damage are not acceptable.

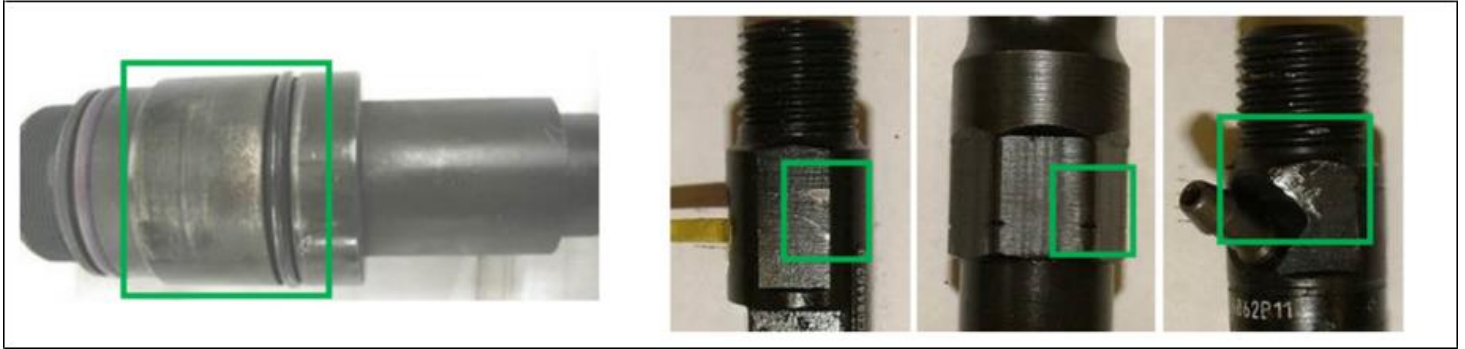


Not acceptable

Note:

Pictures are not of a Smart Injector. For representation only.

Core with light scuff marks or tooling marks is acceptable.



Acceptable

Note:

Pictures are not of a Smart Injector. For representation only.

Core with cracked Nozzle Holder Body are not acceptable.

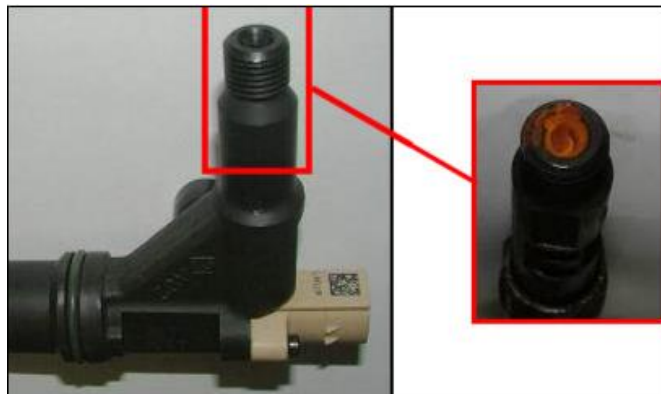


Not acceptable

Damaged core needs to be scrapped.

2.3 Corroded core

Injectors exhibiting heavy corrosion on the body or any corrosion inside are not acceptable.



Not acceptable

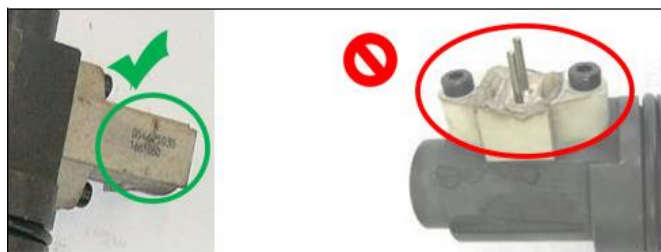
Note:

Pictures are not of a Smart Injector. For representation only.

Corroded core needs to be scrapped.

2.4 Injector identification

All Smart Injector core needs to be able to be identified. In order to identify core the header (electrical connector) must be present. Therefore any core with broken / missing header is not acceptable.



2.5 Core packaging

All returned core should be packed in a suitable way to avoid damage during shipment to Delphi Technologies.

The typical precautions which need to be observed are:

- Injectors should have protective caps on to avoid damage to the thread and to avoid any contamination.
- Injectors should be boxed / bagged to avoid any external damage during transit.
- Injectors should be tagged with relevant customer identification numbers for traceability.

2.6 Core Logistics

It is the responsibility of all customers to cover the associated costs of all core return.

2.6.1 Core Return Form

Please use the DTFX106A(EN) core returns note while sending back the core to Delphi Technologies. The form is available on Direct Evolution and from your customer services contact.