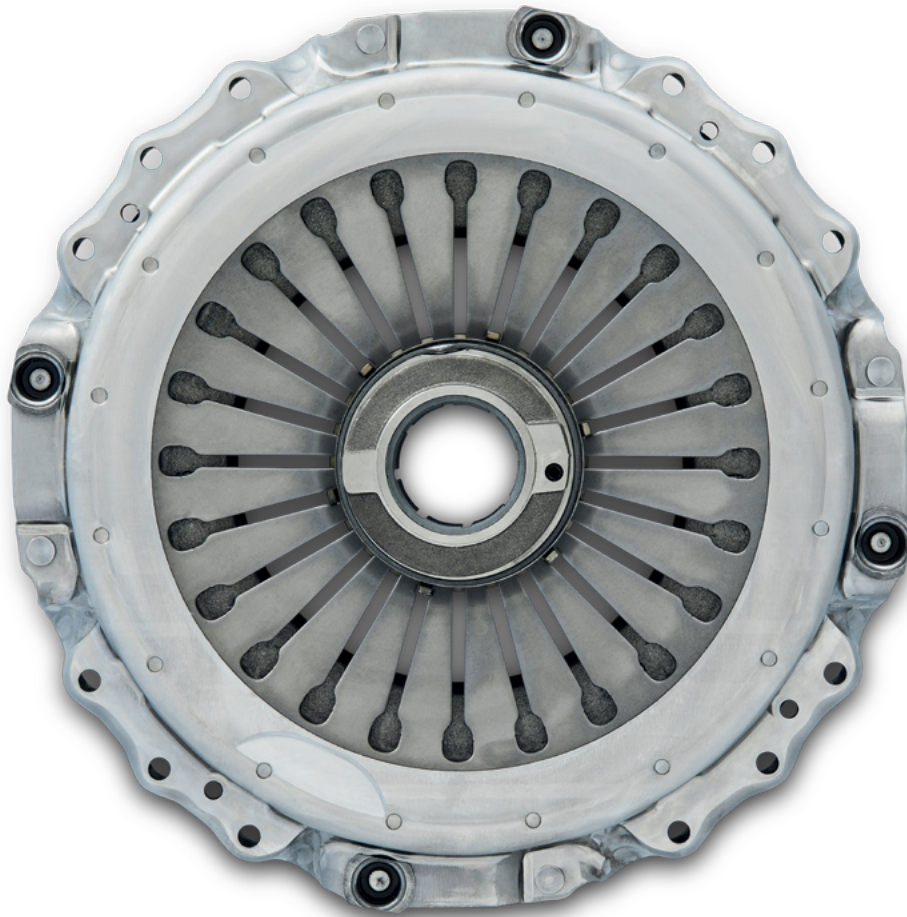




Core Acceptance Criteria

Clutch Pressure Plate for SACHS applications



REMAN

General information

Accepted

- Core dimension between 280 mm and 430 mm.
- Core brand SACHS (brand must be readable on the part).
- Releaser may be missing.
- Core must meet acceptance standards established within this document.
- Core may be corroded (see accepted surface corrosion).
- Core with deformed housing is useable.
- Diaphragm spring tips are broken.
- Blue metal through overheating.

Rejected

- Non-SACHS branding
- Core is smaller than 280mm.
- Heavy mechanical damage - Pressure plate is heavily damaged, broken, dented or cracked.

Acceptance criteria

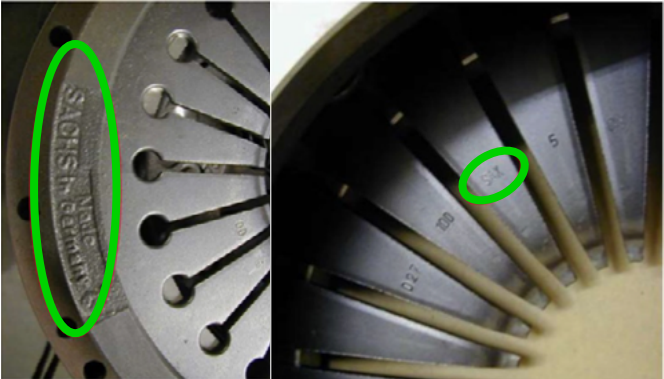
Accepted 



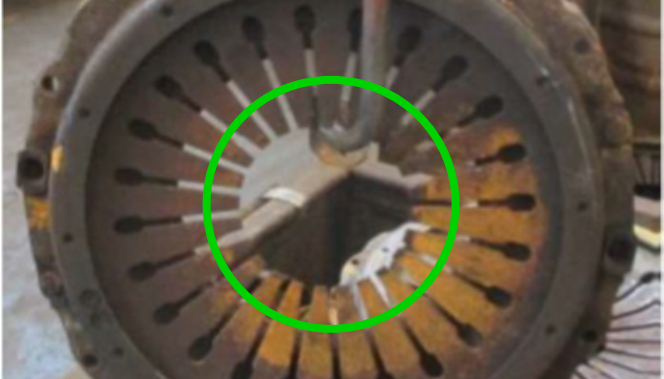
Surface corrosion and dirt



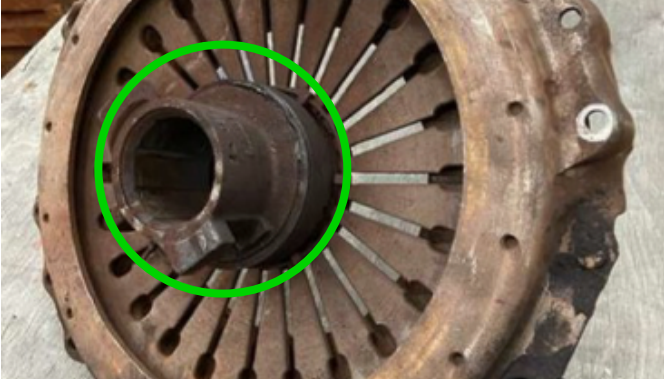
Brand sign SACHS



Brand sign SACHS



Releser may be missing



Releser may be missing



Deformed housing

Acceptance criteria

Accepted ✓



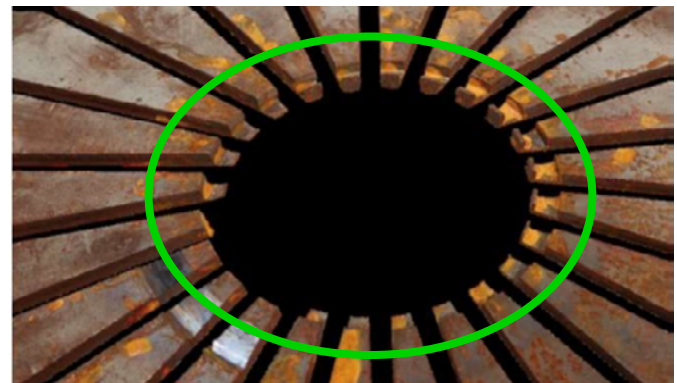
Surface Corrosion



Surface Corrosion



Blue metal through overheating



Diaphragm spring tips are broken



Screw is lower



Complete mounting hole

Acceptance criteria

Rejected



Non-SACHS product – Screw is too high



Brand is ground out



Not to be broken off



Pressure plate broken



Non-SACHS product



Non-SACHS product

Acceptance criteria

Rejected 



Non-SACHS product

ZF Group

ZF Friedrichshafen AG
Windelsbleicher Str. 80
33647 Bielefeld
Germany

aftermarket.zf.com



[instagram.com/zfaftermarket](https://www.instagram.com/zfaftermarket)
[facebook.com/zfaftermarket.global](https://www.facebook.com/zfaftermarket.global)
[youtube.com/@ZFAftermarket](https://www.youtube.com/@ZFAftermarket)
[linkedin.com/showcase/zfaftermarket](https://www.linkedin.com/showcase/zfaftermarket)