



# Core Acceptance Criteria

Clutch Pneumatic Concetric Actuator (ConAct® Relesær)  
for SACHS applications



REMAN

# General information

## Accepted

- Core must be complete.
- Core must meet acceptance standards established within this document.
- Core may be corroded and polluted.

## Rejected

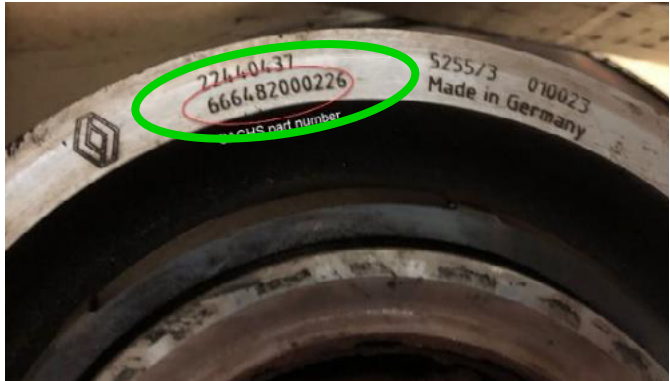
- Core is disassembled.

# Acceptance criteria

Accepted ✓



Brand must be legible on the part (see exemplary picture).



If no SACHS symbol, but SACHS OE - then it is acceptable as well.



If no SACHS symbol, but SACHS OE - then it is acceptable as well.



Part must be complete and not disassembled; Parts with missing sensor are accepted as well.



Surface corrosion and dirty

**ZF Group**

ZF Friedrichshafen AG  
Windelsbleicher Str. 80  
33647 Bielefeld  
Germany

[aftermarket.zf.com](http://aftermarket.zf.com)



[instagram.com/zfaftermarket](https://www.instagram.com/zfaftermarket)  
[facebook.com/zfaftermarket.global](https://www.facebook.com/zfaftermarket.global)  
[youtube.com/@ZFAftermarket](https://www.youtube.com/@ZFAftermarket)  
[linkedin.com/showcase/zfaftermarket](https://www.linkedin.com/showcase/zfaftermarket)