



Core Acceptance Criteria

Clutch Disc for SACHS applications



REMAN

General information

Accepted

- Core dimension between 280 mm and 430 mm.
- Core brand SACHS (brand must be readable on the part).
- Core must be complete excluding missing torsion damper springs or coating.
- Core must meet acceptance standards established within this document.
- Core may be corroded (see accepted surface corrosion).

Rejected

- No SACHS branding
- Core is smaller than 280mm
- Old clutch disc design
- Heavy mechanical damage including heavy corrosion.

Acceptance criteria

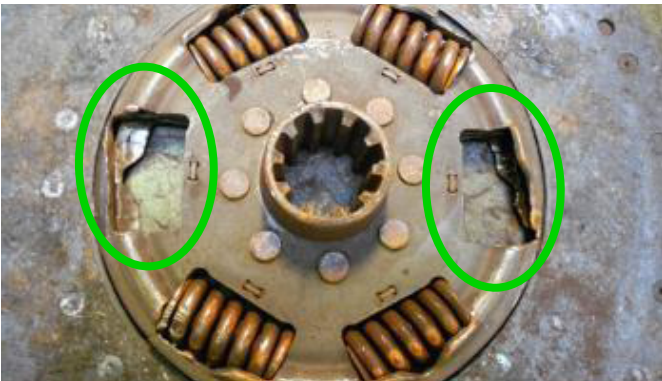
Accepted 



Brand must be legible on the part



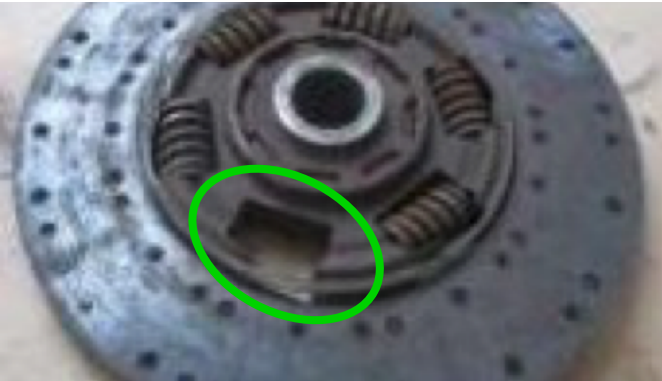
Brand must be legible on the part



Missing torsion damper springs



Missing coating



Missing torsion damper springs



Missing coating

Acceptance criteria

Accepted ✓



Core dimension



Brand SACHS must be readable on the part



Brand SACHS must be readable on the part



Brand SACHS must be readable on the part



Surface corrosion

Acceptance criteria

Rejected



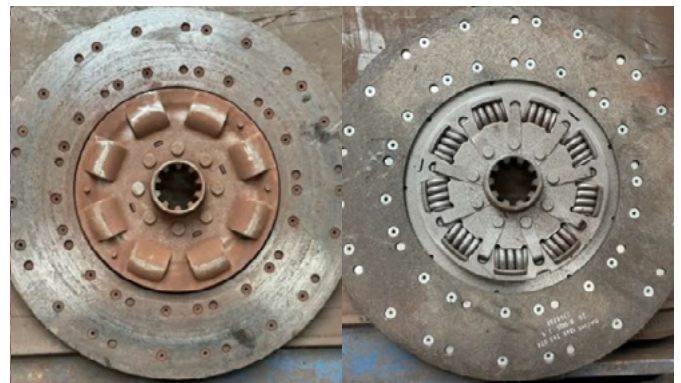
Clutch disc is bent or broken. Hub is broken.
Damper is broken.



Clutch disc is bent or broken. Hub is broken.
Damper is broken.



Heavy corrosion



Old clutch disc design
- covered springs | 8 or more springs

ZF Group

ZF Friedrichshafen AG
Windelsbleicher Str. 80
33647 Bielefeld
Germany

aftermarket.zf.com



[instagram.com/zfaftermarket](https://www.instagram.com/zfaftermarket)
[facebook.com/zfaftermarket.global](https://www.facebook.com/zfaftermarket.global)
[youtube.com/@ZFAftermarket](https://www.youtube.com/@ZFAftermarket)
[linkedin.com/showcase/zfaftermarket](https://www.linkedin.com/showcase/zfaftermarket)