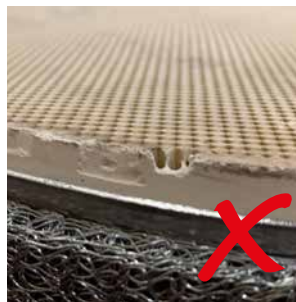


To receive your deposit back, the old part must be suitable for the refurbishment. Please note the following information to ensure a smooth and easy refund of your deposit:

- The oldcore must correspond to the delivered article number.
- We only accept OEM or EminoX filters.
- For the return please use the enclosed protective bag and our original packaging with corresponding filling material to prevent transport damage.



In addition, the following old core criteria apply:



The filter insert must not show any external or internal damage or contamination from liquids.

(Internal damage can only be checked by X-ray or flow measurement. However, rattling noises can be a first indication)



The edges and sealing surfaces of the filter must not be damaged.



The housing must not have any holes, dents or show any other (mechanical) damage.

