

COMMERCIALLY CONFIDENTIAL

Core Acceptance Criteria and Returns process - NON UK Customers

EQUIPMENT: CR INJECTOR REMANUFACTURING AFTERMARKET

SUBJECT: Core Acceptance Criteria and Returns process - NON UK Customers

1. INTRODUCTION

This document describes the core acceptance criteria and core return process to be applied for all Remanufactured Common Rail injectors available from Delphi Technologies.

Current Portfolio includes Injectors from Original Equipment Manufacturers: Delphi Technologies / Denso and Continental/VDO.

Each injector needs to be checked against the following criteria.

2. CORE ACCEPTANCE CRITERIA - GENERAL OVERVIEW

Examine the condition of core and reject if unacceptable, typical criteria includes:

- Incomplete assembly ([section 1](#)),
- Assembled of scrap / incorrect parts,
- Dismantled (injector must not be partially dismantled),
- Tampered with,
- Damaged ([section 2](#)),
- Badly corroded ([section 3](#)),
- Painted ([section 4](#)),
- Unidentified core ([section 5](#)),
- Protection caps ([section 6](#)),
- Core packaging ([section 7](#)),

- Core logistics ([section 8](#))

Core exhibiting any of the issues describe above needs to be scrapped.
It will not be accepted for core surcharge credit by Delphi Technologies.

2.1 Incomplete injector

The injector must be complete and assembled (not dismantled).

Incomplete core needs to be scrapped.



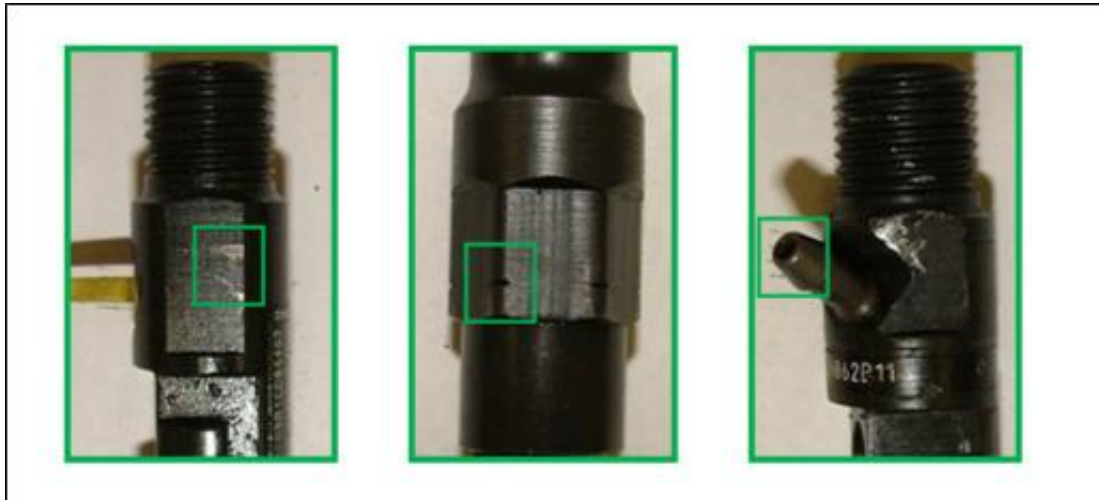
2.2 Damaged core

Injector bodies with heavy scrapes and gouges or with thread damage are not acceptable.



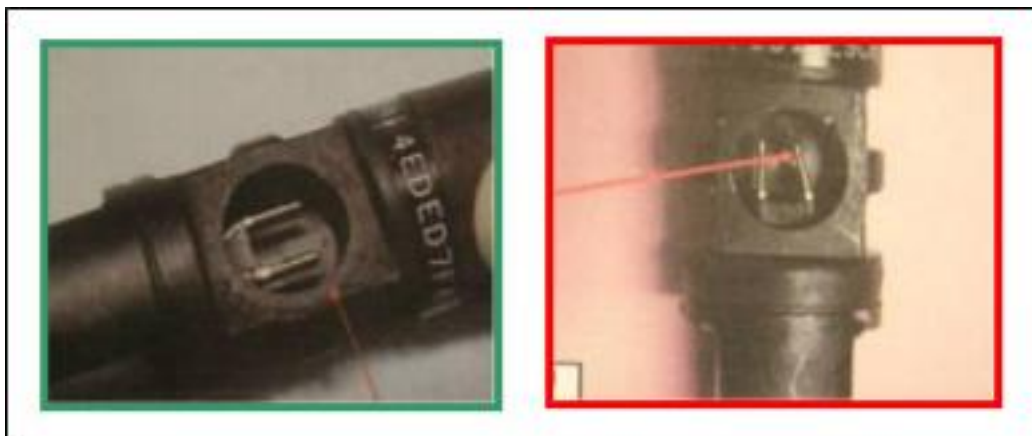
Not Acceptable

Core with light tooling marks is acceptable.



Acceptable

For Delphi Technologies CR Injectors Electrical connectors must not be damaged, bent or corroded.



Acceptable / Not Acceptable

For Denso and Continental / VDO CR Injector Damaged electrical connectors are acceptable.



Acceptable

2.3 Corroded core

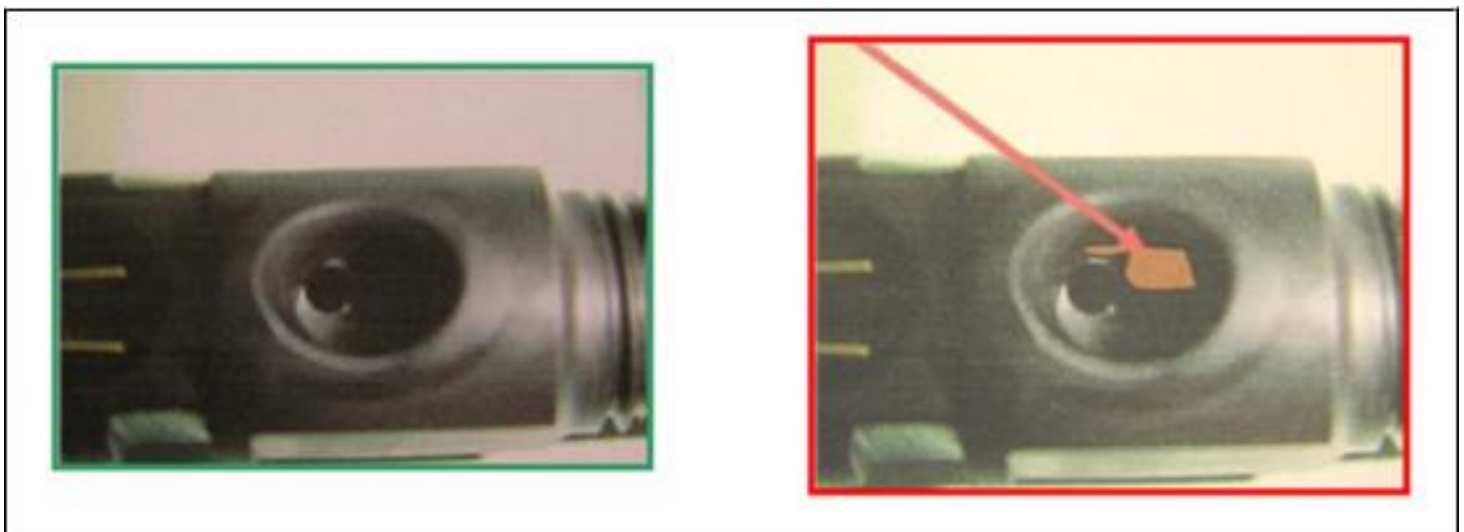
Injectors exhibiting heavy corrosion on the body or any corrosion inside are not acceptable.

2.3.1 HP Inlet



Not Acceptable

2.3.2 Backleak connection



Acceptable / Not Acceptable

2.3.3 Body



Not Acceptable

2.3.4 Corroded core needs to be scrapped

2.4 Painted / Hard marked / cosmetically treated core

Core must not be painted or hard marked such as hard stamped, hand or laser etched.

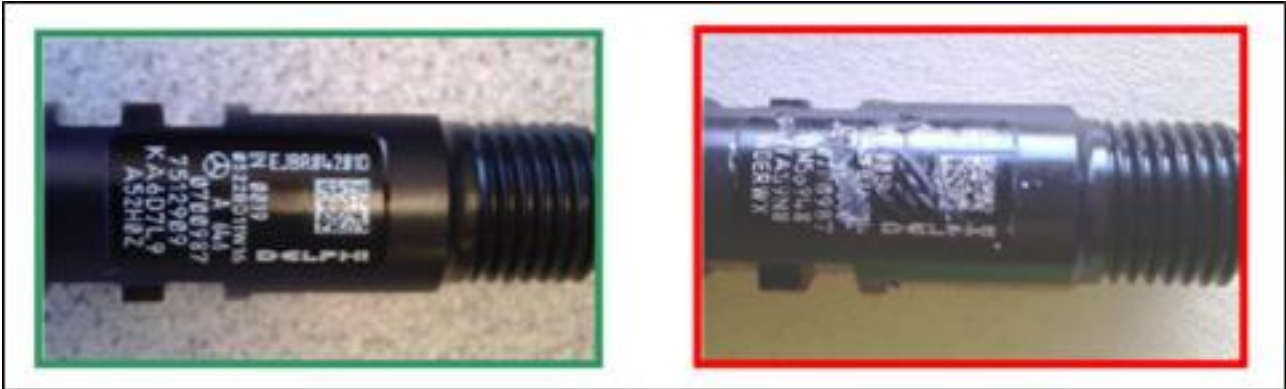
- Cosmetically treated or painted core needs to be excluded.
- Hard marked core needs to be excluded.
- Slight printing traces might be acceptable.



Not Acceptable

2.5 Unidentified Core

- Cores with no labels / identification are not acceptable.
- Damaged labels with visible part number are acceptable



Acceptable / Not Acceptable

2.6 Protection caps

- HP Inlet - It is mandatory to have a protection cap on the HP cone.
- Backleak circuit - It is highly recommended to use a protection cap on the backleak connection, if applicable.

Failure rate of the cores might increase during the reman process due to absence of caps.



Acceptable

Caps can be re-used from new injectors to equip returned core.

2.7 Core packaging

All returned core should be packed in a suitable way to avoid damage during shipment to Delphi. The typical precautions which need to be observed are:

- Injectors should have protective caps on to avoid damage to the thread and to avoid any contamination.
- Injectors should be boxed / bagged to avoid any external damage during transit.
- Injectors should be tagged with relevant customer identification numbers for traceability.

2.8 Core Logistics

It is the responsibility of all customers to cover the associated costs of all core return.