

# Gearbox & modulator

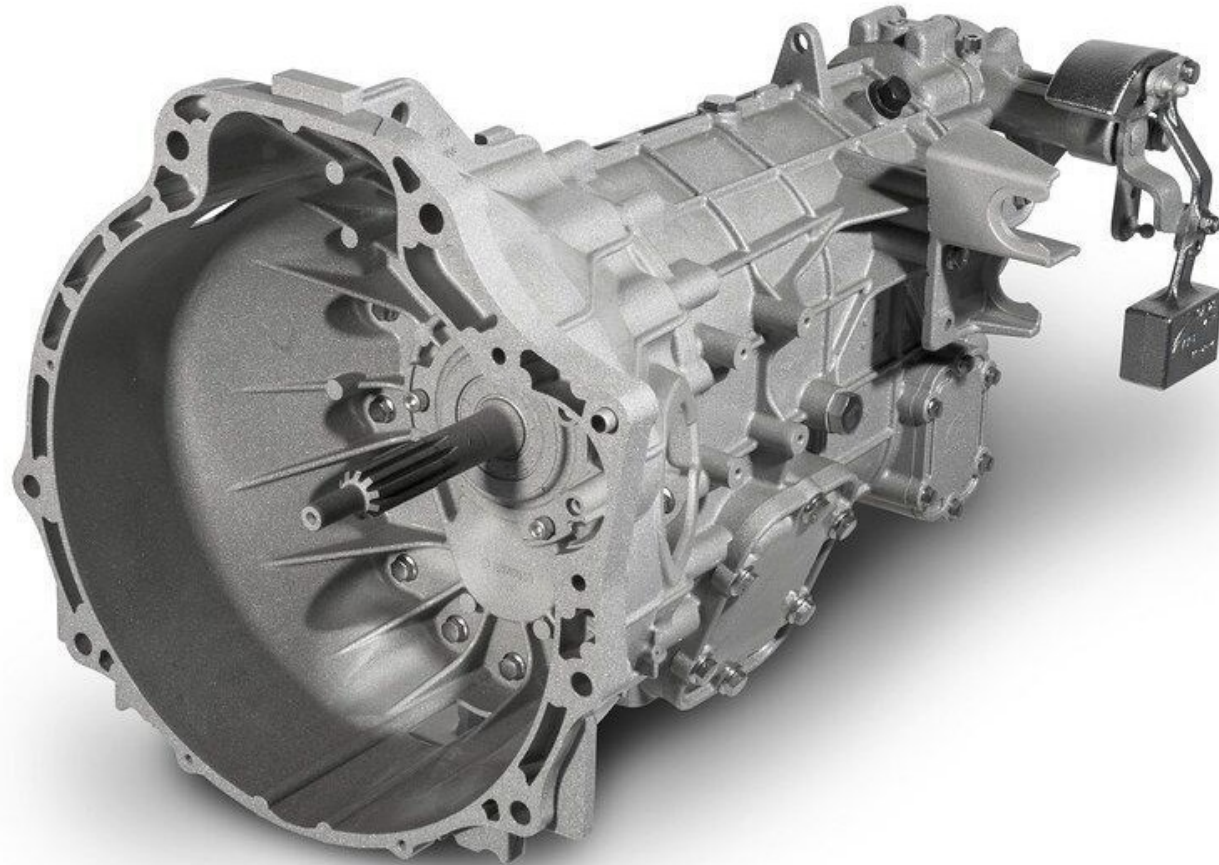
## Criteria:

Identification

Completeness

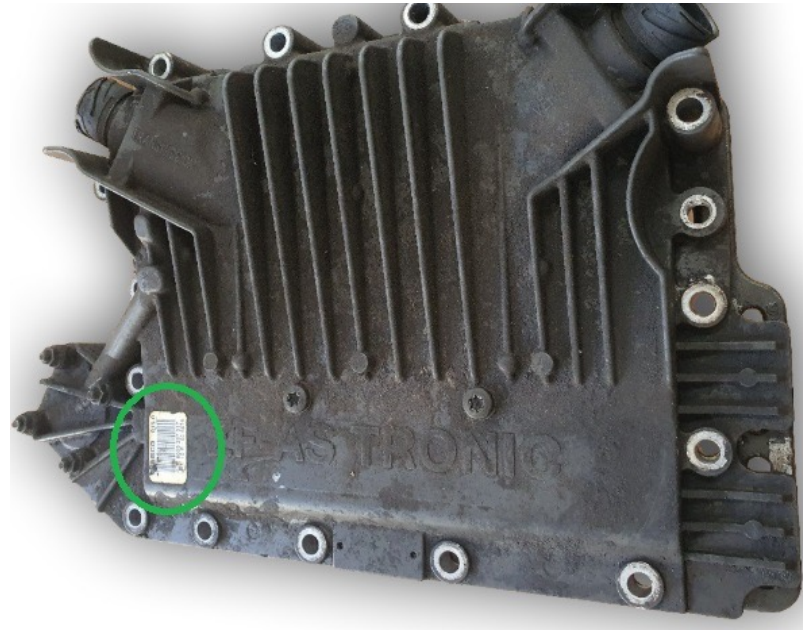
Mechanical damage

Fluid drained



Identification

Part must be identifiable



## Completeness

Part can not be incomplete or dismantled.



Mechanical damage

Mechanically damaged part  
is not acceptable



## Fluid drained

Fluid (oil or cooling liquid) must be drained.



**For further questions, please  
contact your local Skuba dealer**

**Skuba**  
group

