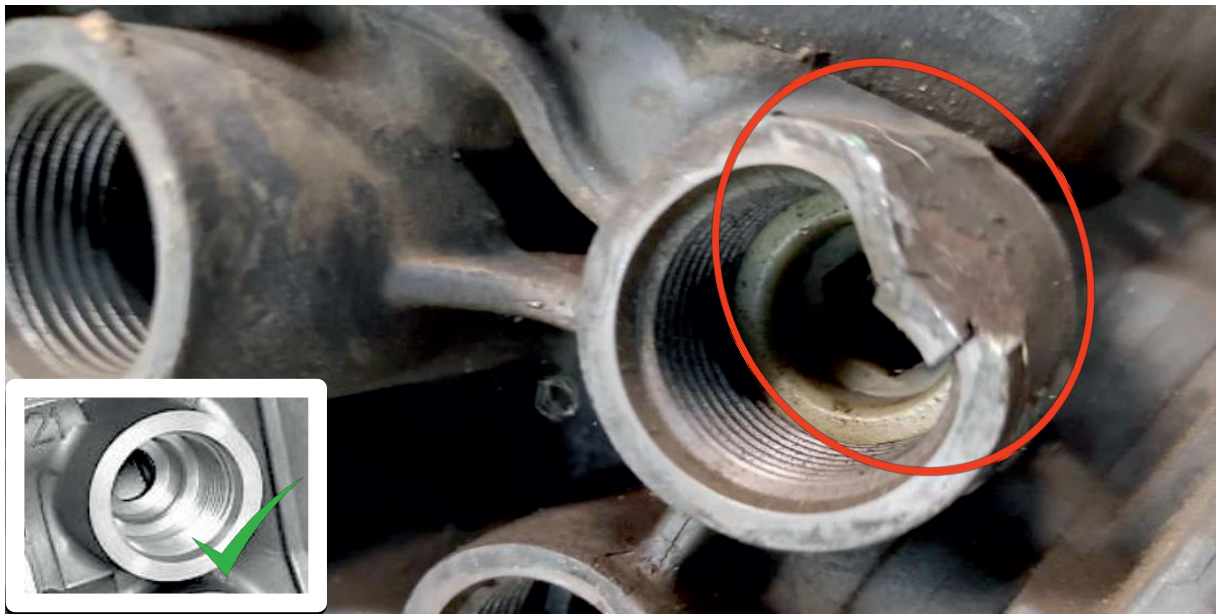


# GENERAL TERMS AND CONDITIONS FOR RETURNING THE EBS CORE

NO MANUFACTURER NUMBER PLATE OR ILLEGIBLE PART NUMBER

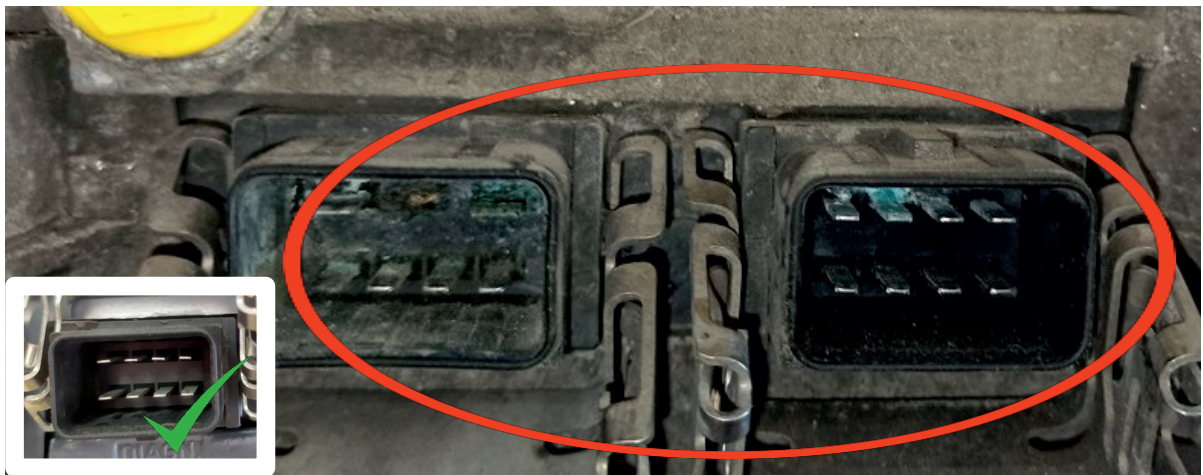


**DAMAGED OR OXIDIZED THREAD IN THE ALUMINUM BODY**

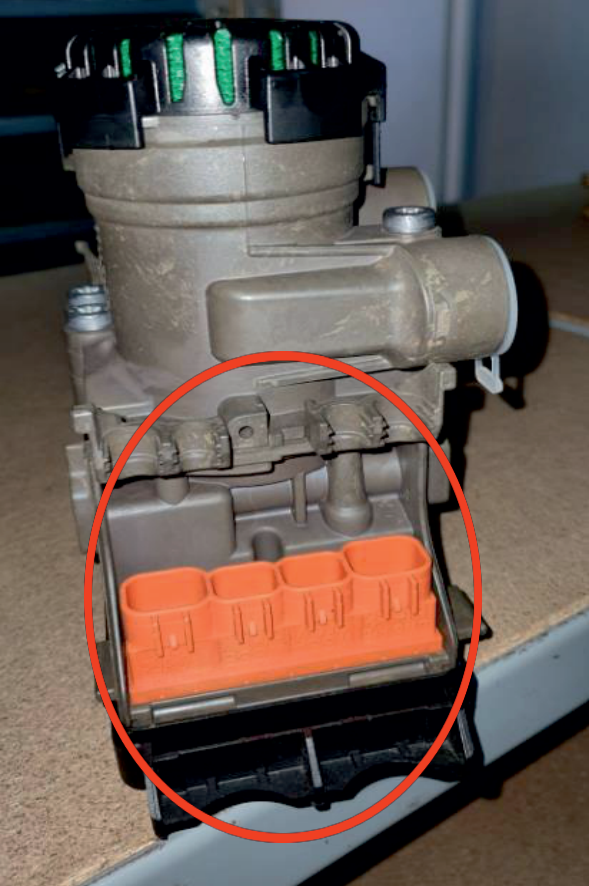
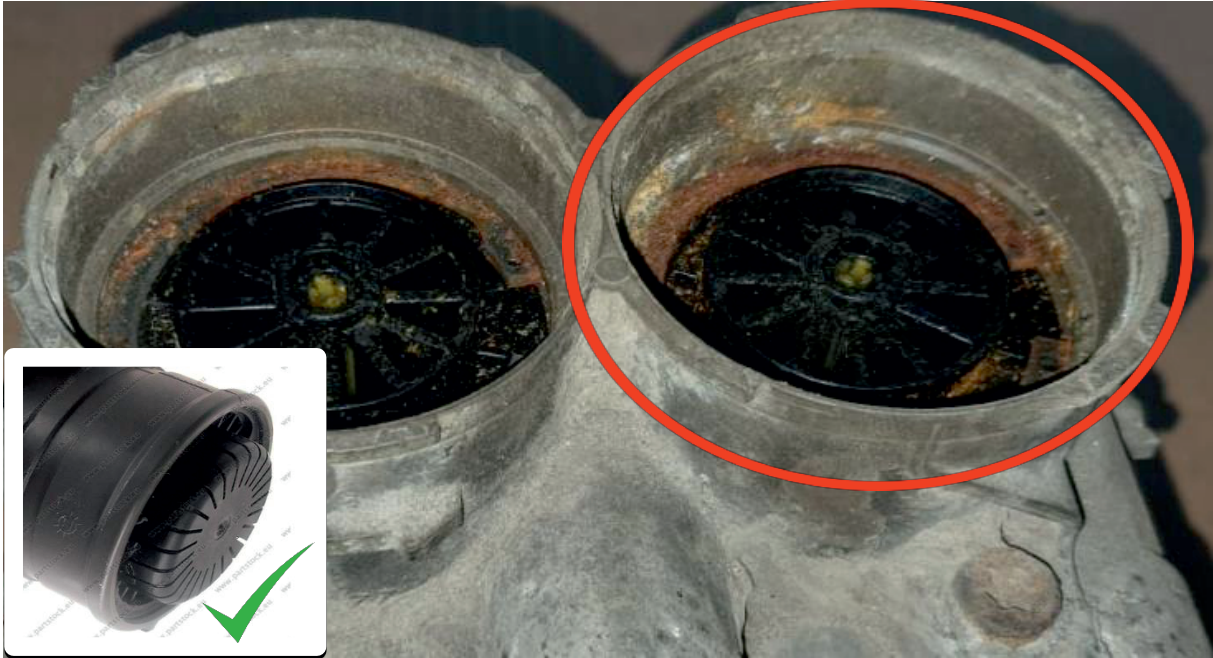


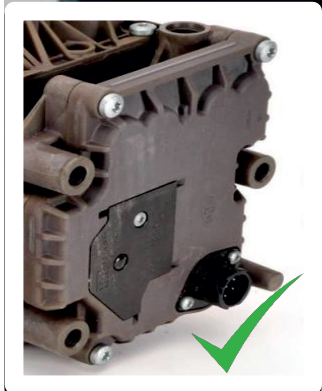
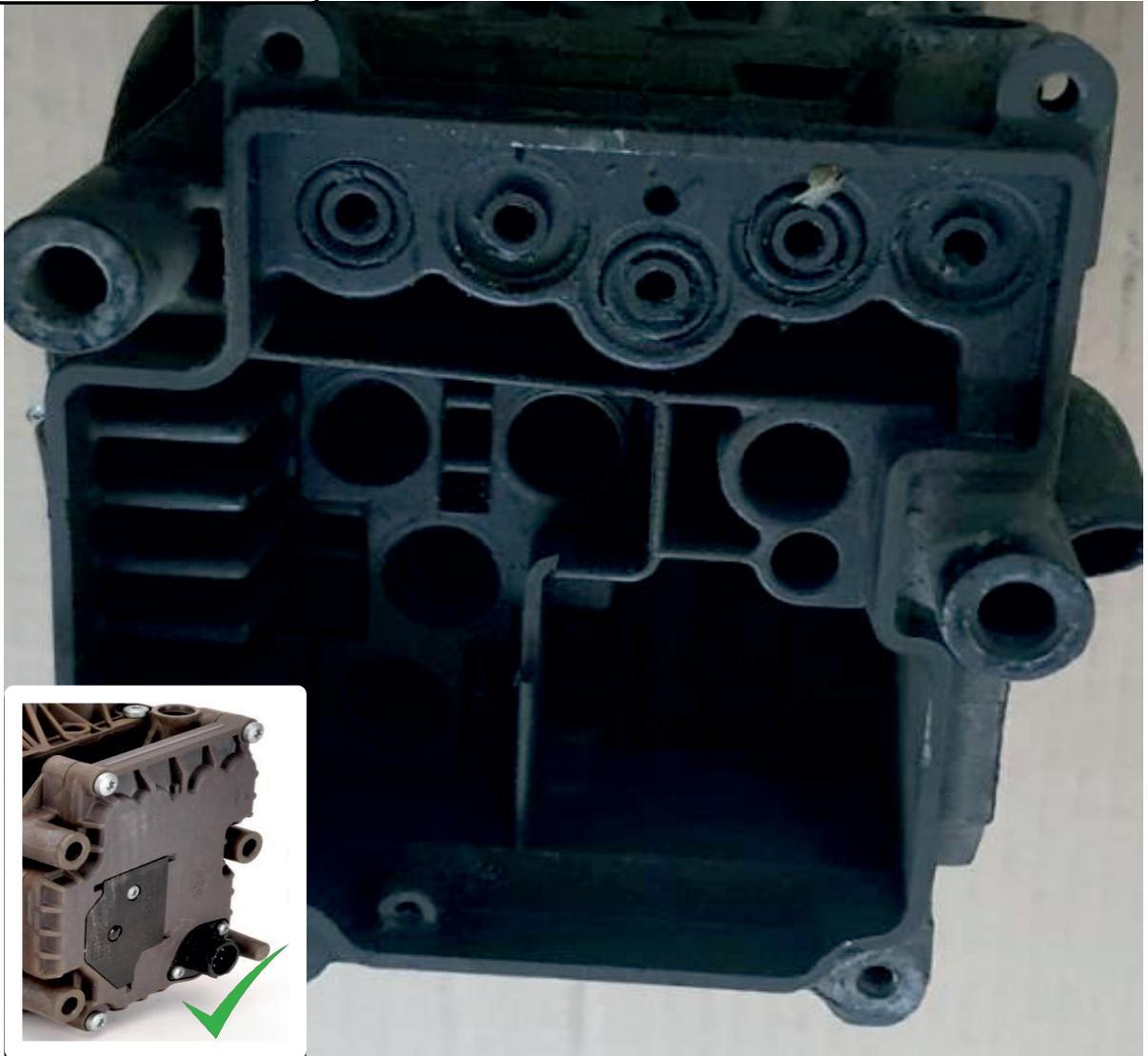
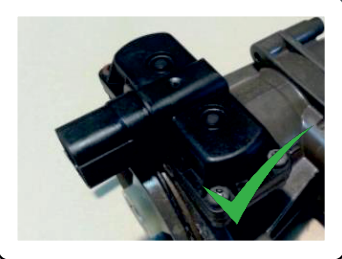
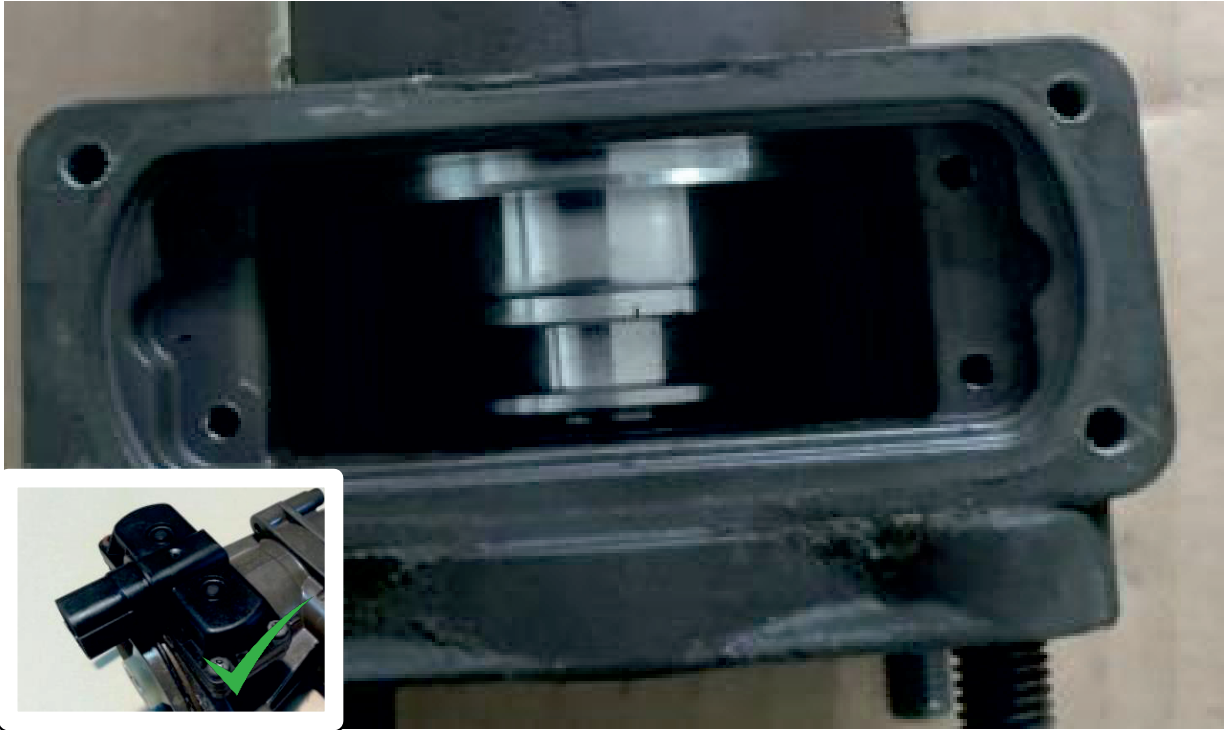
**\* Does not apply to the WABCO TEBS E core**

DAMAGED ELECTRONIC SOCKET

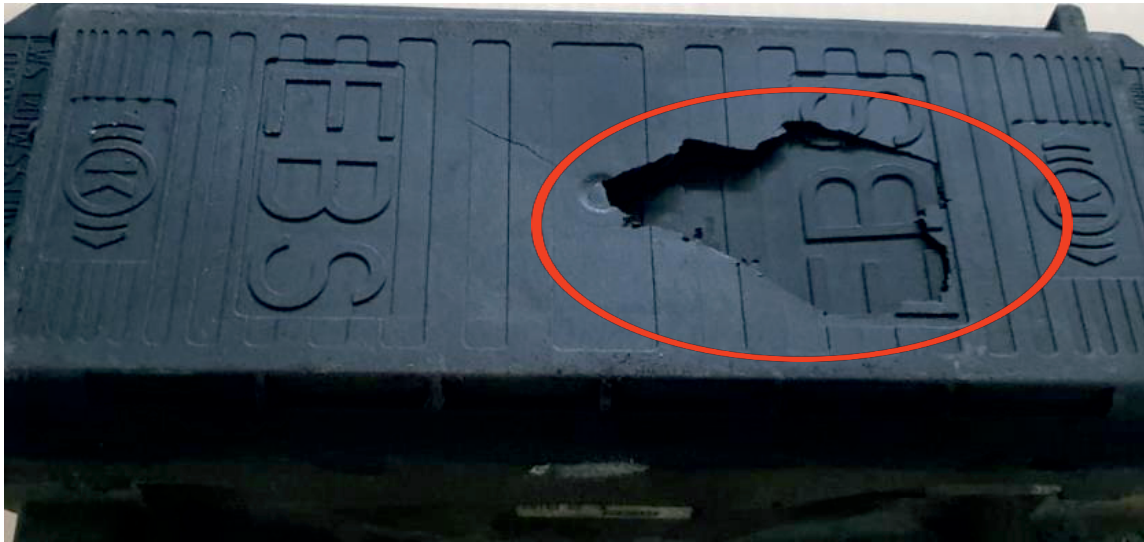


DISASSEMBLED CORE - MISSING VALVE COMPONENTS: SILENCERS, ELECTRONICS COVERS

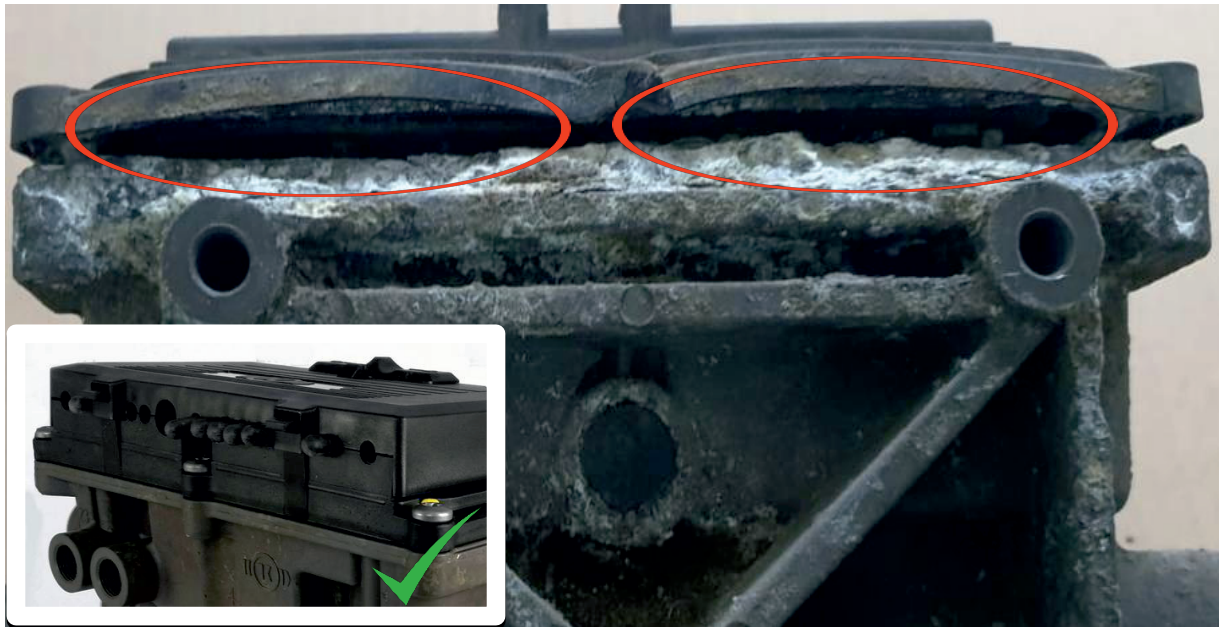




**DAMAGED PLASTIC COVER (CRACKED/BROKEN/KNOCKED)**

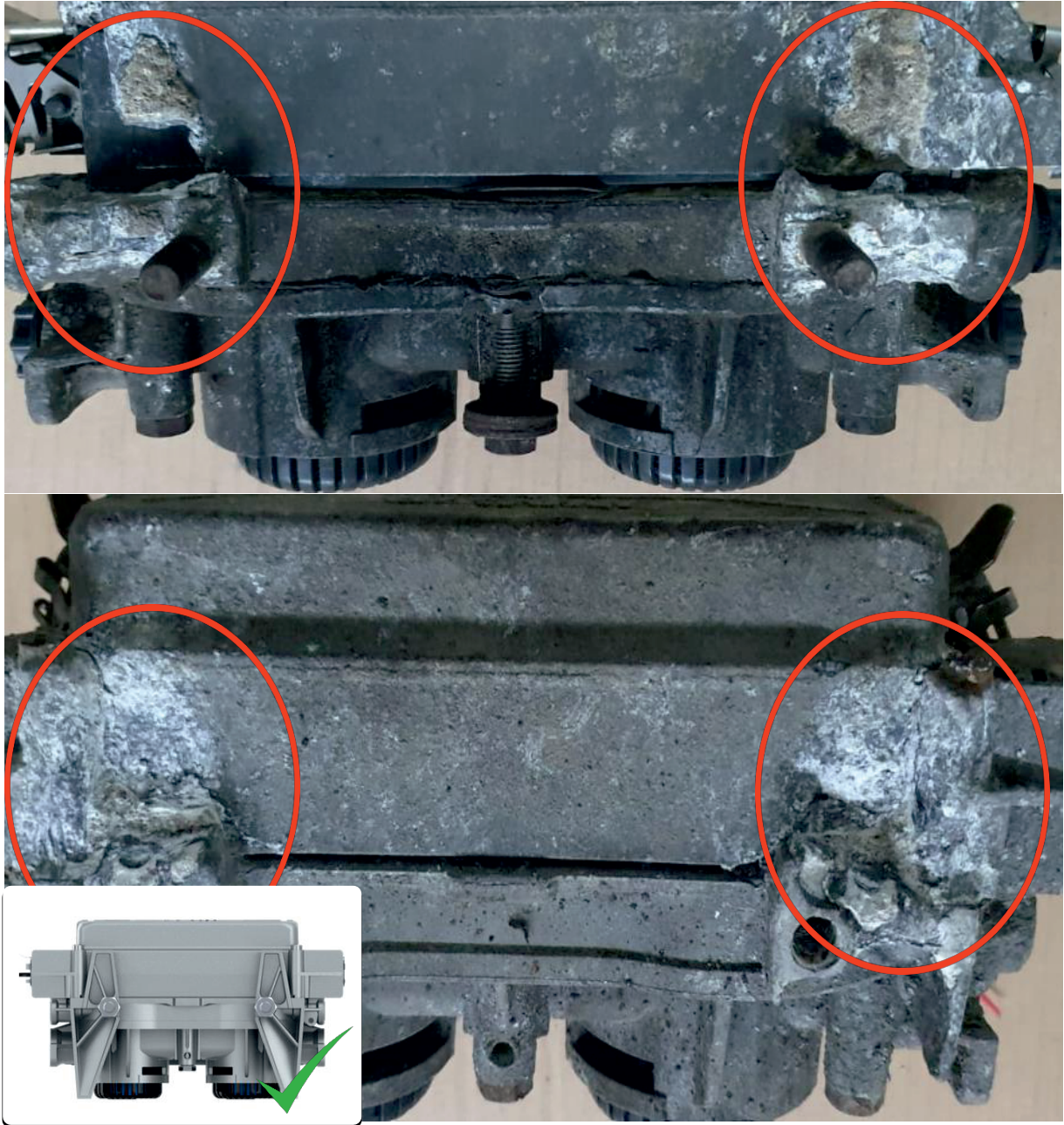


**OXIDATED ALUMINUM BODY FITTING TO THE ELECTRONIC PART**



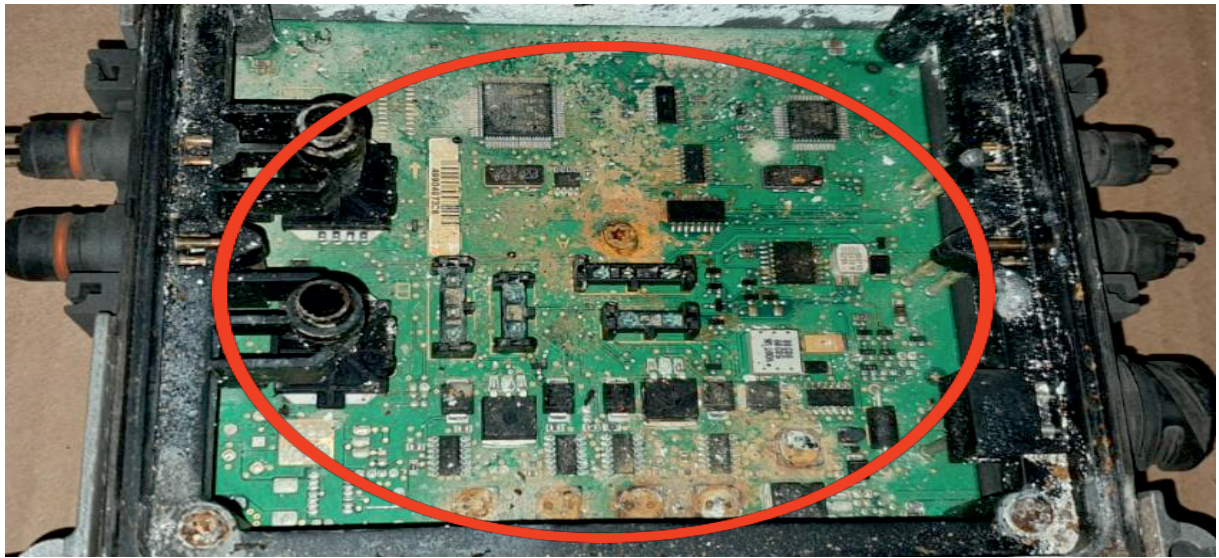
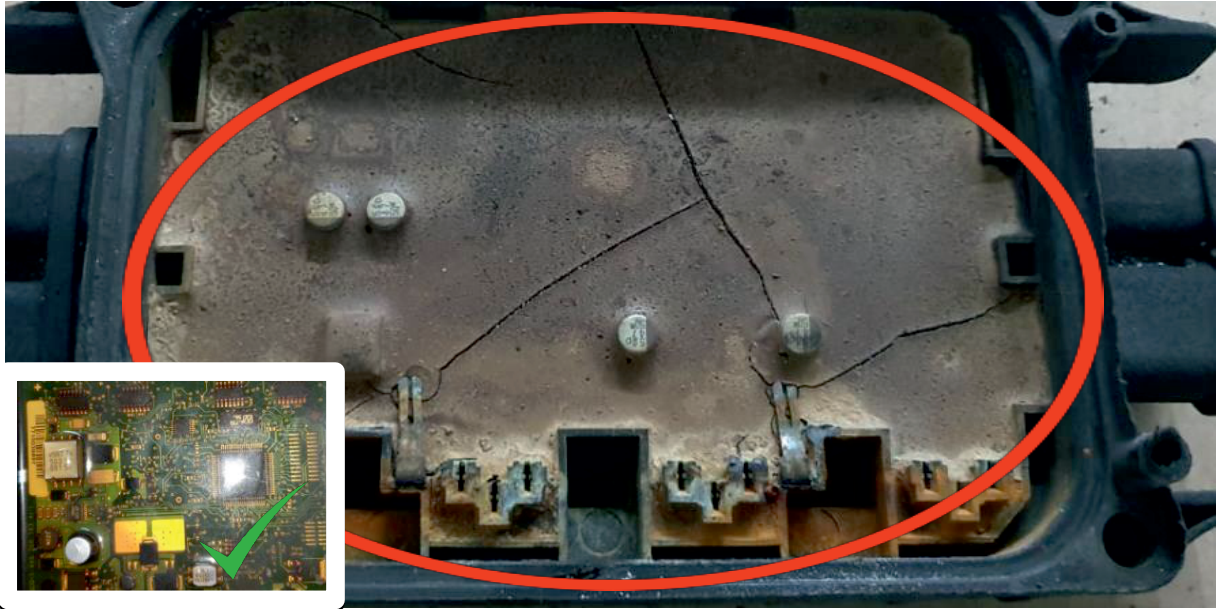
**\* damaged housing of the Wabco TEBS E core would not disqualify the core to be accepted if the electronic part is not damaged**

## DAMAGED HOUSING

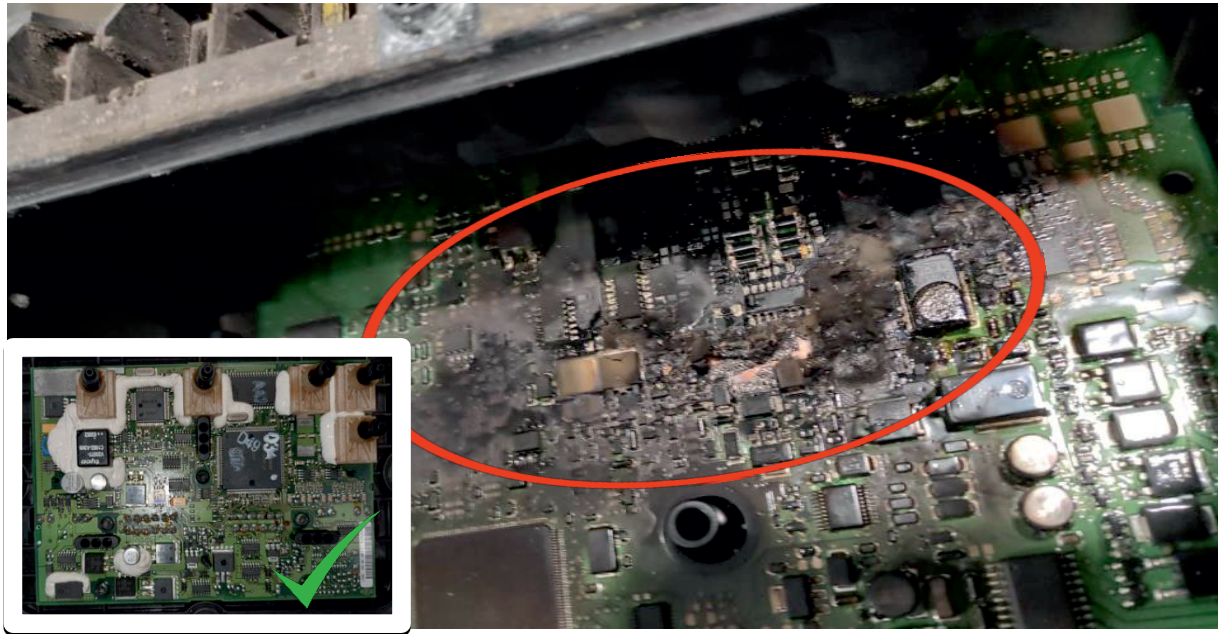
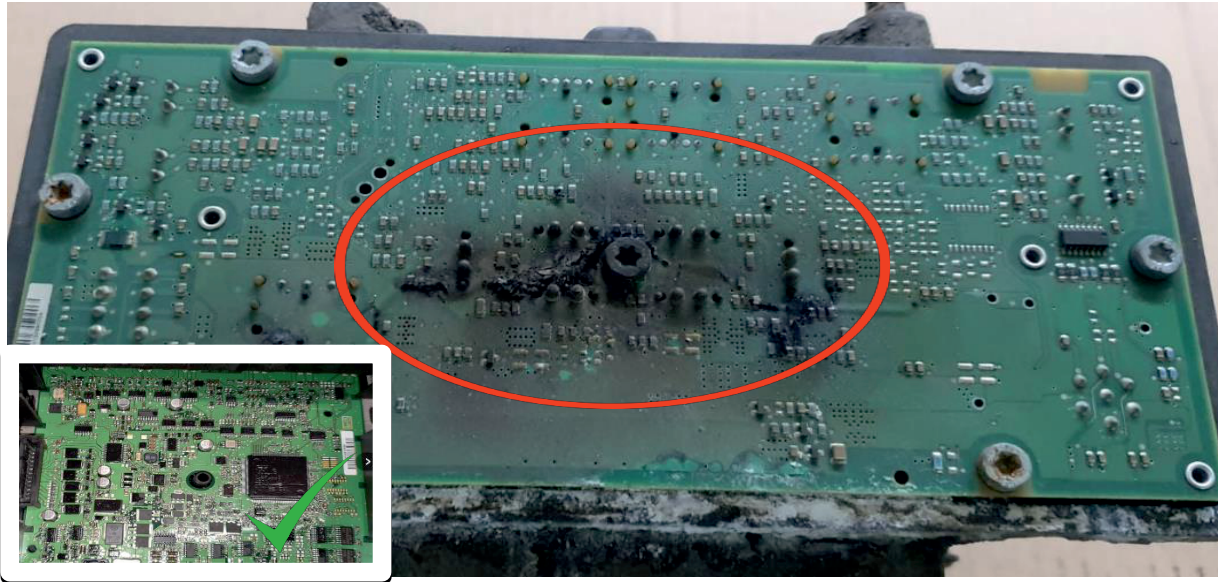


\* Does not apply to WABCO TEBS E cores

ELECTRONIC BOARD FLOODED



ELECTRONIC BOARD BURNED



## **GENERAL TERMS AND CONDITIONS FOR RETURNING THE EBS CORES**

1. Returned used products should have been marked with Original Equipment (OE) part number. Copies of OE products will not be accepted.
2. The returned used products must be complete, completely assembled.  
Burned products or any used products that have been damaged or destroyed due to improper handling during disassembly, operation or transportation will not be accepted. For example: lids must not be dented or cracked (must be airtight), sockets and threads must not be damaged, pins must not be bent or broken.  
Damaged housing of the Wabco TEBS E core would not disqualify the core to be accepted if the electronic part is not damaged.
3. No signs of previous attempts to rebuild the item have been made.
4. Rust on the outer surface of the elements is allowed. Internal surfaces and components may only show signs of rust. Large traces of rust resulting from improper storage are unacceptable