

Brake caliper

Criteria:

Identification

Completeness

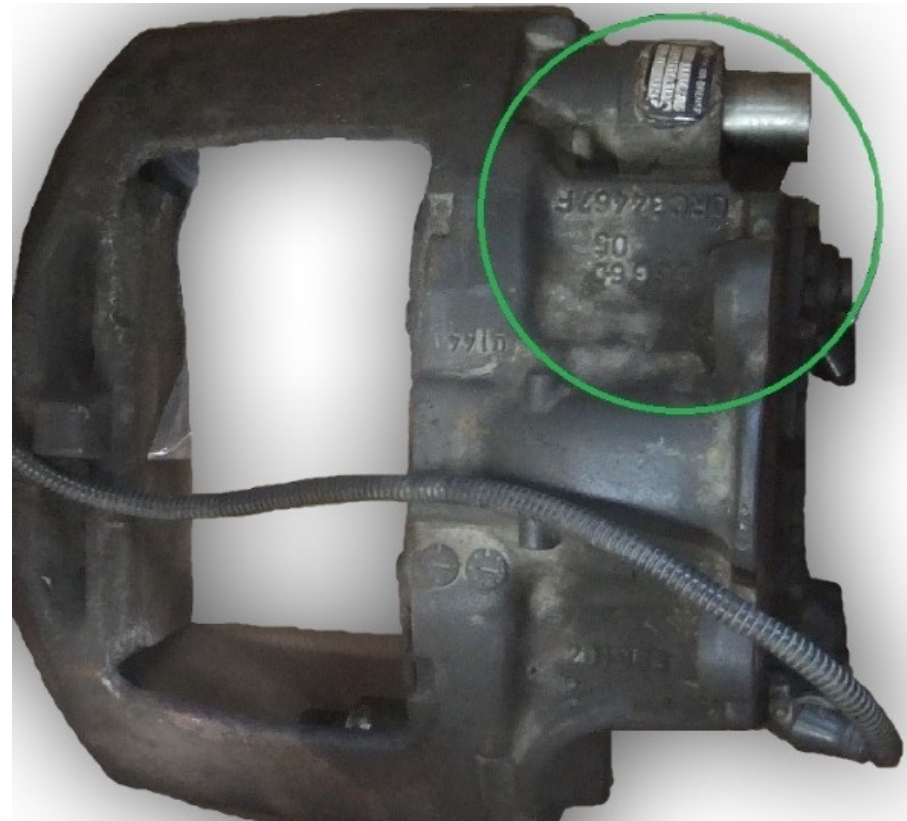
Mechanical damage

Corrosion



Identification

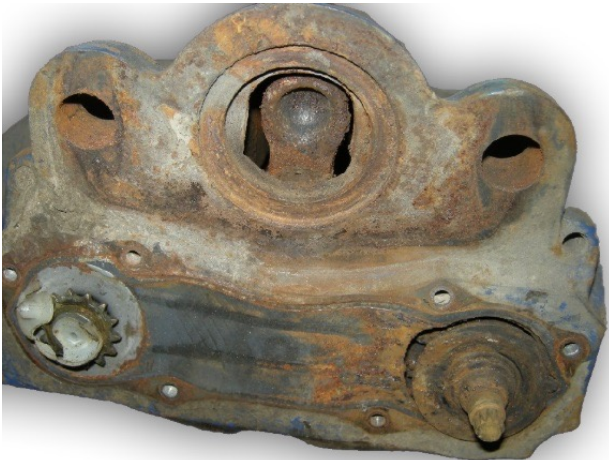
Part number on housing or box





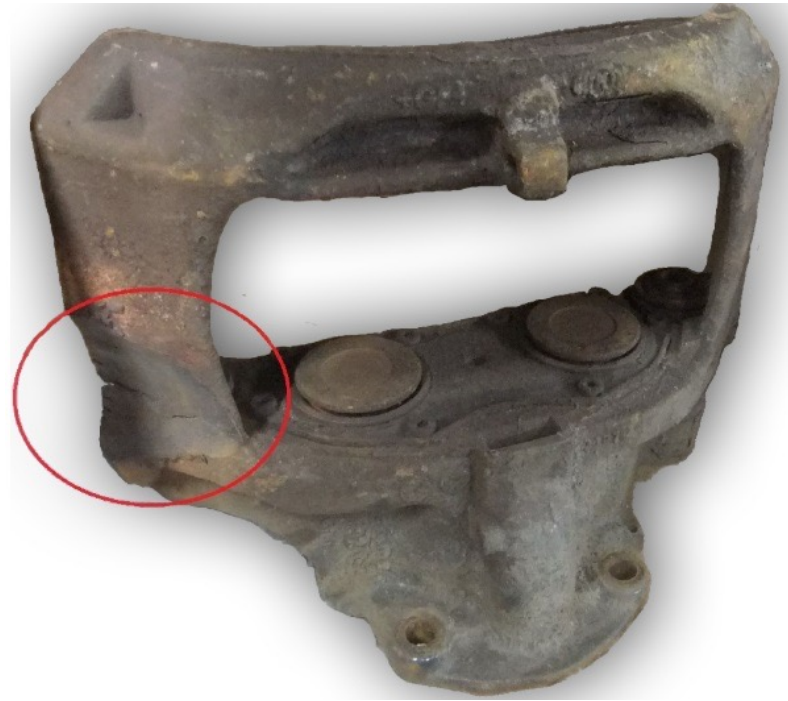
Completeness

Part can not be incomplete or dismantled.
Tappets can not be broken, flexed or cut



Mechanical damage

Mechanically damaged part
is not acceptable



Corrosion

Heavily corroded caliper is not acceptable



**For further questions, please
contact your local Skuba dealer**

Skuba
group

