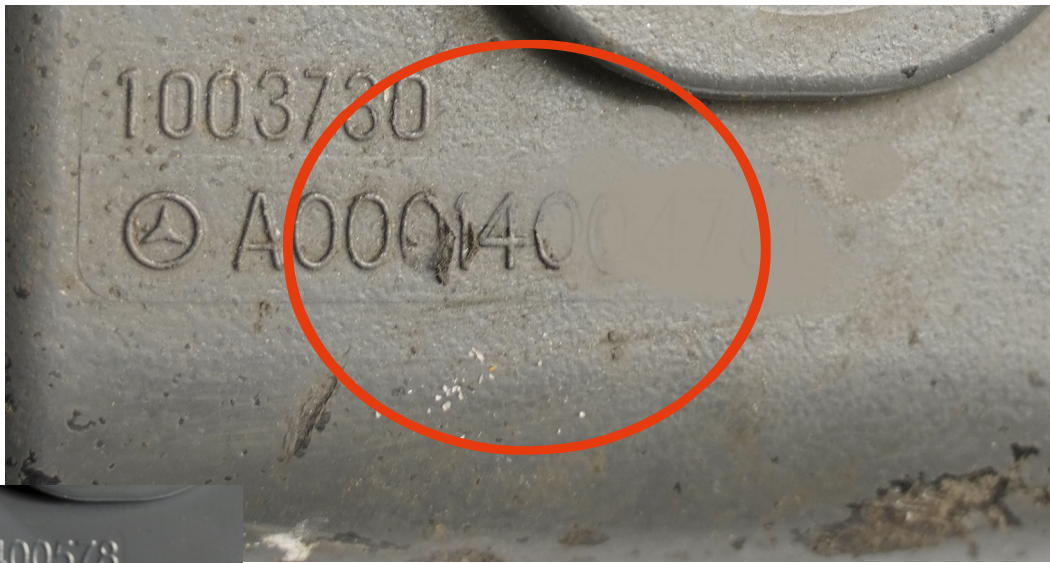


## GENERAL TERMS AND CONDITIONS FOR RETURNING THE HILITE ADBLUE CORE



**NO MANUFACTURER NUMBER PLATE OR ILLEGIBLE PART NUMBER**



**DAMAGED ELECTRONIC SOCKET**



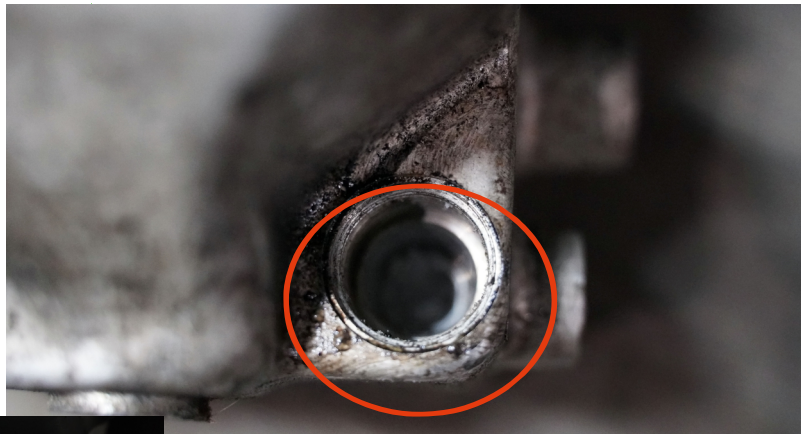
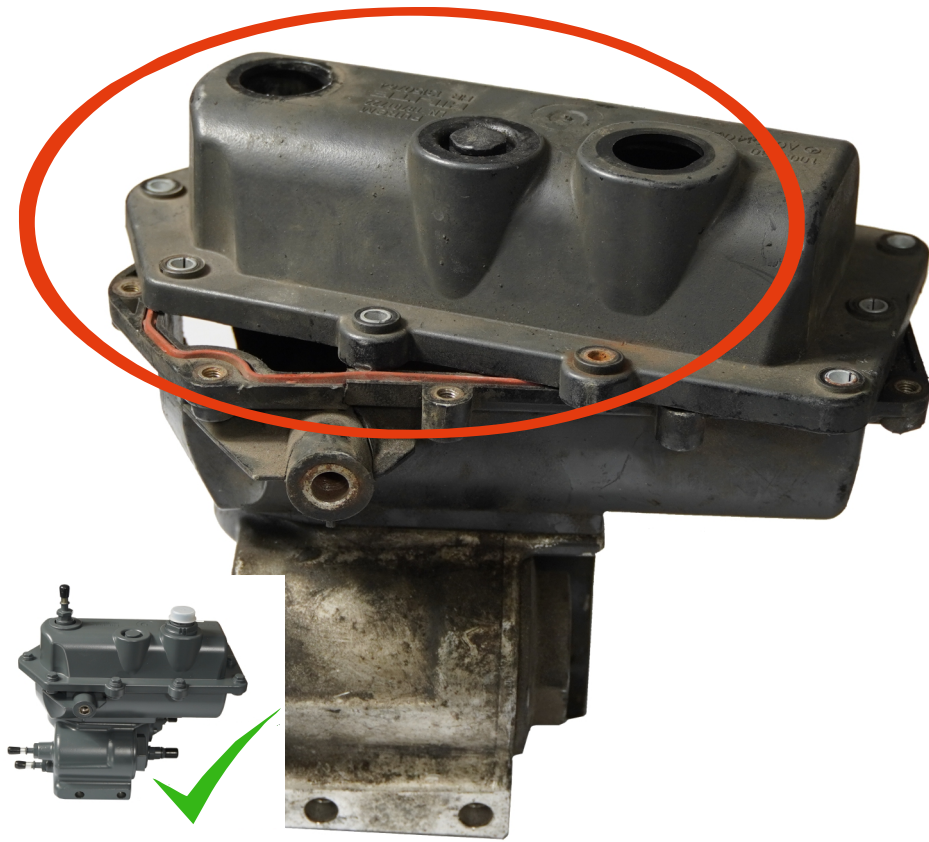
**DAMAGED STUB SOCKET**



**DAMAGED THREAD IN CORE HOUSING**



DISASSEMBLED CORE



# DAMAGED HOUSING



## **ADBLUE CORE RETURN ACCEPTANCE CRITERIA**

1. Returned used products should be the Original Equipment (OE). Copies of OE products will not be accepted.
2. The products used must be complete, completely assembled. Burned products or any used products that have been damaged or destroyed due to improper handling during disassembly, operation or transportation will not be accepted. For example: damaged or burdned electronic socket, damaged spit/stud socket, luqid entering the electronic part, damage to the housing.
3. No previous attempts to rebuild the element have been made.
4. Rust on the outer surface of the elements is allowed. Internal surfaces and components may only show signs of rust. Large traces of rust due to improper storage are unacceptable.